



WOT!

About Ratby

PUBLISHED BY RATBY SCOUT GROUP



A GOOD 'GOOD FRIDAY' WAS HAD BY ALL!



On Good Friday this year, Churches Together in Ratby put on a one day activity club for children in the village which was a great success. Over 80 children met in the parish church and church rooms for exciting ways of experiencing the story of Easter in banners, craft activities, prayers, songs and videos. A picnic lunch was shared in the church during which we remembered the last supper that Jesus shared with his friends. There was even a chance for football and games in the church rooms.

BIG CHOICE AT SUPER PRICES!



ELECTROLUX

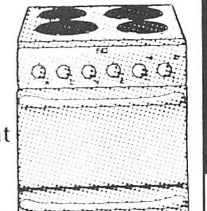
- Fridge
- 147 Litres (5.3 cu.ft) Capacity
 - Covered Dairy Compartment
 - 2 Full Width Door Storage Shelves
 - 2 Separate Salad Drawers With Glass Cover
 - 2 Star Freezer Compartment

£149.99

• Dimensions: H 850mm x W 550mm x D 600mm
Model ER1642T

CREDA

- Twin Cavity Electric Cooker
- Sealed Plate Hob Including Two R2 Technology Fast Heat Plates
 - Fully Variable Grill In Top Compartment
 - Traditional Side Heat Oven
 - Credaclean Liners In Oven
 - Easy Grip Control Knobs



£269.99

• Dimensions: H 900mm x W 500mm x D 590mm
Model 'Capri' C150EW



WHIRLPOOL

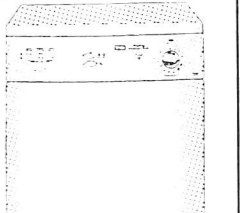
- '6th Sense' Washing Machine
- 1000rpm Spin Speed
 - 5.5Kg Load Capacity
 - Energy & Wash Rating 'A'
 - Special Daily Load Programme
 - Quick Wash 30 Minutes/ 30' Programme

£249.99

• Dimensions: H 850mm x W 600mm x D 595mm
Model AWM6100/3

CREDA

- Condensor Dryer
- 6Kg (13lb) Load Capacity
 - 2 Heat Settings - High & Low
 - Final Cool Tumble
 - Anti-Tangle 2-Way Tumble
 - No Vent Kit Required



£229.99

• Dimensions: H 850mm x W 595mm x D 600mm
Model 'Simplicity' T622CW



23-27 Station Road, Ratby,
Leicestershire LE6 0JQ

Tel: Leicester (0116) 2394544

We are an independent retailer - with friendly local service and personal attention - but we're also members of EURONICS - Europe's biggest independent electrical buying group, which means we can offer you the very best deals on the highest quality brand names!

- EURONICS CUSTOMER**
- TOP BRANDS AT LOW PRICES
 - SPECIAL OFFERS
 - LOCAL DELIVERY
 - GUARANTEED AFTER SALES SERVICE
 - EXPERT STAFF

EURONICS CENTRES

Making your money go further!



JULIE'S HAIRDRESSING

MAIN STREET RATBY

Traditional and Modern Styling

Telephone 239 2406

**GAS
APPLIANCE
SERVICES**

- Appliance Servicing and Installation
- Breakdown and Repair Services
- Plumbing and Heating Installation
- Kitchen & Bathroom Design and Installation
- Quality Guaranteed by Experienced Engineers



**YOUR DOMESTIC GAS
BOILER SERVICED**



6 SAXONS RISE, RATBY, LEICS. LE6 ONF
Tel: 0116 2393662

A.H. COLEY

Plumbing and Heating Repairs
New Installations, Bathrooms, Showers

For a full range of Services contact;
4 Saxons Rise
RATBY LE6 ONF
Telephone 239 4277



Call the Molly Maid
service for consistent
careful cleaning

Cleaning to our customer's satisfaction,
tailored to meet your needs.
Our highly-trained and insured
staff visit at any frequency you
wish using our own equipment
and materials.
There's no contract
tying you down.

Please call for a
personalised quotation.

0116 223 8296



WHAT CAN YOU SEE IN THE COMMUNITY ORCHARD DURING THE SUMMER?

Group member Robert Hollyman has kept a seasonal diary of a year at the Orchard, recording all the plant and wildlife he has noted on his visits.

Based on his notebook, there is a lot to see during the summer.

Birds

Blackbirds and Great Tits are regular visitors, and you might be lucky and spot the green woodpecker. There are greenfinches too, and last summer a noisy family of magpies.

The oak tree opposite the orchard was a roost for collared doves, crows, chaffinches and starlings last year.

Pond

Last year's dry weather had a serious effect on the pond, by the end of July there was very little water left. Earlier you can expect to see purple loosestrife growing at the pond margins, and water forget-me-nots.

Woodland Area

In June and July wild strawberries can be found, as well as red campion. White nettles were still flowering around the edges of the wood in August. Trees in the wooded area include; Common or black Alder, goat willow, grey willow, crack willow, hazel and oak.

Hedgerows

By the end of July you should see the black sloe berries forming on blackthorn bushes, and haws on the hawthorn. By August, rose hips and guelder rose berries will be turning red.

Last year a colony of grasshoppers was seen in the long grass along the hedgerow, and also in the field near the wood.

Meadow and Orchard area.

You may spot cabbage white, tortoiseshell, or even small copper butterflies around the meadow. The grasses will be flowering, and you'll see clover and bindweed.



Small tortoiseshell

LETTER TO THE EDITOR

Dear Editor,

What is happening to our lovely village? Just lately there has been so much rubbish everywhere.

Firstly, on Station Road-is it because the dustmen didn't turn up, or because people do not put their rubbish out early enough for pick up? What a mess it gets into when animals have obviously had a sort through the bags. Then the annoying thing is, people do not take their rubbish back in again until the next collection.

Also, what is it with folks who just dump dustbins/black bags full of garden rubbish on their fronts, hoping the dustmen will take them away. Surely by now these people MUST know that garden rubbish goes in brown bins for collection once a fortnight? There are some front gardens littered with these bags. A journey to the tip doesn't take long!

How can you sell a house with that first impression? Sand and cement bags are getting quite popular too.

I was upset to see so much litter outside Pabari's Newsagents too.

We used to have a very clean village, now it's going 'down hill.'

Please, please bring your rubbish off the fronts. It looks horrible and lets the village down.

A resident.

Name and address supplied.



Barn Dance
Saturday 10th July 2004
Kirby Muxloe Village Hall
7.30 - 11.00pm

Barn Dance band - 'Bang on the Wall'
Caller - 'Marie Rogers'

Comfortable shoes essential!
Lots of parking available
Tickets - £10 including buffet
Contact Chloe for tickets on 0116 2242432

The Edwardian Centenary Garden Fete

This year's parish church garden fete at the Vicarage is a celebration of 100 years of garden fetes since the vicarage was built. Take a trip back to the era of Mary Poppins with vintage bicycles, games from the Edwardian era and traditional brass band music from the Ratby Co-operative Junior Band.

There will also be presentations by 2Bee dance productions and the scouts. Competitions will include a 'best parasol' competition and best dressed chimney sweep! Plus all the usual favourites and Edwardian tea gardens for those wanting a breather. The fun starts at 2.00pm on Saturday 26th June at the vicarage in Groby Road.

If anyone has any photos of Ratby garden fetes from before the 1960's Richard, the vicar would be very interested to see them, in case we could put a display together!



OAKLANDS RIDING SCHOOL



WE CATER FOR EVERYONE FROM
THE NOVICE TO EXPERIENCED RIDER

All weather riding area
Ring Julie on 238 7570

HIS and HERS

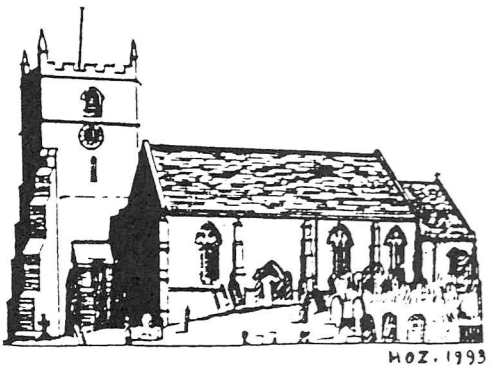
**LADIES AND GENTS
HAIR DRESSING**
OAPs REDUCED RATES

Appointments not always necessary.

156 STATION ROAD, RATBY
239 4429

News from St Philip and St James.

It may be a few weeks ago now, but Holy Week and Easter was very memorable time at church this year. On Good Friday we welcomed over 80 children to the activities which lasted most of the day – thanks to all the helpers who made possible such a busy time and then we quietened a little bit for a time of reflection. This continued with a joint service in the evening which helped us to think about the events we remember year by year. The Bible says that the women went to Jesus' tomb early in the morning. So, on Easter Day we started with a service outside the south door at 6.30am. This was followed by 'bacon butties' and a hot cup of tea. Perhaps not strictly Jewish but most welcome!! We ended the day with a special Songs of Praise when those present in the congregation were invited to choose their favourite Easter hymn. At the end of the month we celebrate Pentecost. What's that I hear you say? Come along and find out!!



RATBY SCOUT GROUP AGM CHAIRMAN'S REPORT

In his 20th Annual report, Chairman Alan Sims gave thanks to all the leaders for their hard work. He said that there were always new and increasing pressures, which this dedicated team of leaders rise to, often putting Scout business before their own private lives. The group is very active in all sections, combining new activities with the more traditional.

He thanked the committee too, for the hard work behind the scenes, ensuring the future of Scouting in the village. However, he added, the current committee cannot go on forever, and new members are always needed. He said, 'If you can help, please talk to any of the leaders or committee, we are reasonably casual and friendly, whilst getting things done. All are welcome to our monthly meetings held on the first Tuesday of the month in the Church Rooms.'

There were disappointingly few parents of children who benefit from the Scout Group activities at the AGM.

Alan speculated that this is probably because there are no complaints, and everyone is happy with the way groups are run.

But if you are a parent, and reading this, why not offer your help? A new generation of members is essential to the Group's future.

- STILL NOT MADE A WILL?
- HOW MUCH LONGER CAN YOU PUT IT OFF ?
- DON'T ASSUME THAT WITHOUT A WILL ALL IS TAKEN CARE OF – IT'S NOT !!!
- Without a Will the courts may decide how your assets are divided..... a concerning thought as this may not be as you wished
- Without a Will your loved ones can suffer further distress and costs!!

At Treasured Wills (your local Willwriters) we have the experience in producing a hassle free Will at a low fixed cost in the comfort of your own home.

Call FREEPHONE 0800 035 2456 to make an appointment or for more information.

Corporate Member Society of Lawyers
A Member of the Willwriters Association

RATBY CO-OPERATIVE BANDS

CONCERTS

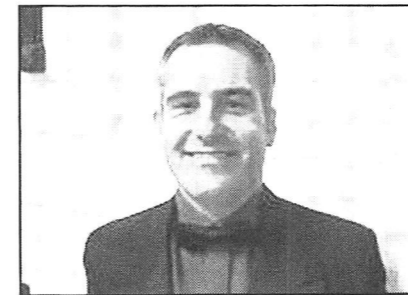
COMPETITIONS

March 7th was the date of the Midlands Regional Qualifying round of the British Brass Band Championships Midland Area.

The Mid Band had stiff competition, but gave a great performance of a difficult test piece. They were unlucky not to be placed in the top 6. Guest Conductor, Michael Fowles brought his superb skills to Ratby, and he and the Senior Band were delighted with a 5th place, beating a number of 'big names.'

The Youth Band, under conductor Rebecca Plant, brought home a Bronze award from the National Youth Band Championships.

David Maplestone set to take Ratby to the Cup



The Ratby Co-operative Band are pleased to announce the appointment of David Maplestone to lead them at the Senior Cup Contest which will be held in Blackpool next month. David (Dai) is well known in the Brass Band world not only as a highly successful Conductor but also a fine instrumentalist and the Band are very much looking forward to working with him.



Porter's Discount Carpets

121/3 STATION ROAD, RATBY

TELEPHONE 239 3238 or 239 5202. MOBILE 07860 551142

QUALITY AT THE
RIGHT PRICE

SHOP AT HOME
SERVICE



ask for it by name!

Laminated Flooring

FREE FITTING
ON ALL CARPETS
EXCEPT REMNANTS



GEORGIAN
CARPETS

PABARI'S RATBY NEWS

5 STATION ROAD RATBY
0116 239 3287

For the Largest Selection in Ratby of
BEERS WINES and Spirits

A VAST CHOICE OF CONFECTIONERY &
SOFT DRINKS

A LARGE VARIETY OF GREETING CARDS,
WRAPPING PAPER and STATIONERY

NEWSPAPERS and MAGAZINES
DELIVERED TO YOUR DOOR DAILY

We are Agents for
SKETCHLEY DRY CLEANING

Video rental and Photocopying
OPEN Monday-Friday 6.15-10pm. 2.30-10pm
Saturday 6.15-10pm
Sunday 7.30-2pm. 7pm-9pm

RATBY COMMUNITY ORCHARD

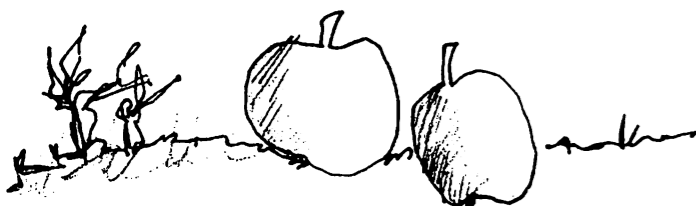
Apple Day 2004

Once again we are planning to celebrate Apple Day in October.

Plans include activities and games at the Orchard on Taverner Drive, a chance for villagers to come and see the trees, which will hopefully be bearing fruit again this year.

We want to widen the festivities this year to involve other village groups and organisations. Ideas might include 'special APPLE MENUS' in village pubs, apple cakes at coffee mornings, and perhaps stalls selling home made produce.

Letters will be coming out soon. Watch out for more information in the next issue of Wot in August.



SCOUT RAFFLE WINNERS

1. £100 * Chris Taylor
2. Basket of Wine * Richard Murray
3. Southern Comfort * Lyn Garwood
4. Bull's Head Meal * Alan Sims
5. CO-OP Voucher * L Ghose
6. MacDonalds Voucher * Wade
7. Toy Rabbit * Joy Shilliam
8. Foxes Mints * DF DH
9. Geary's Cake * C Wallace
10. Tea Set * D Tooley
11. Tiger Bitter * B Lowe
12. David Lloyd Pass * D McLeod
13. Swimming Tickets * K Kleaver
14. ODEON Cinema Tickets * A Jones
15. Ruck sack and torch * M Clayton
16. Ruck sack and torch * Debbie
17. Necklace and Earrings * K North
18. Book and Game * J Garrett
19. Arriva Tickets * Sue
20. His n Hers Hair Cut * Peake
21. Hollywood Bowl * Mrs Freeman
22. CAT Rucksack * A M Brown
23. Port * Bryan Foster
24. Pictures * Mrs Wilson-Whitford

Have you heard of the Patient Advice and Liaison Service (PALS)?

Provided by Hinckley and Bosworth Primary Care Trust, PALS has recently celebrated its first anniversary. Acting as a customer services department for the NHS, PALS is happy to help with any health or health related question. Over the past year a steady stream of people have contacted the PALS service with questions about their own health or the health of their family. We have been able to help them by:

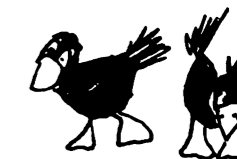
- Providing information about health services and support groups
- Chasing hospital appointments, locating medical equipment
- Signposting to other services

Whatever your question about the health service, we will do what we can to help or can be in touch with other services on your behalf to answer your queries. PALS is based on the first floor of Hinckley Health Centre. There are two PALS Officers, Jane Cassell and Becky Millward. You can contact them on 01455 441971 or E-Mail Pals@hbpct.nhs.uk. An answer phone is available out-of-hours.

PALS will work with you to help you get the best out of your NHS

~~~~~

## RATBY LOCAL HISTORY GROUP



Our March Meeting - This was when Professor Jeff Richards of Southampton Institute came back to his home village to talk about 'Lord Grey of Groby: aristocrat and regicide'. Very briefly, we know very little about Lord Grey's early life apart from the fact that he was the eldest of nine children and that he became a Leicester MP in 1641 at the age of 17. His role in Parliament brought him into conflict with the crown and he fought on the Parliamentary side in the first battle of the Civil War at Edgehill, where he commanded a troop of 100 men. His ongoing involvement with Cromwell and Ireton led to him being the only lord of the realm to sign Charles 1<sup>st</sup>'s death warrant. He became distanced from Oliver Cromwell and was implicated in the failed Shoreditch plot against him. He was imprisoned at Windsor from where he bought his release, only to die soon afterwards at the age of only 34.

A full description of the contents of Jeff Richard's talk is available in the Group's latest newsletter available by telephoning 2394168. A fascinating book, written by Jeff Richards is in print.

After the interval, Doug Harwood continued with a further discussion on the Effects of The Enclosure Act on Ratby. We hope to provide more details in the next issue.

**Our May Meeting** - This took place on Friday May 21<sup>st</sup> 2004 in the Village Hall and the first part was in the form of our AGM. After this, Michael Ball gave a talk entitled 'The Tax Man Cometh'. More details of this will be in our next Wot article.

**Dates For Your Diary** - The Group are having a guided walk around the Highfields district of Leicester on Sunday 20<sup>th</sup> June starting at 2.00pm. This walk is entitled 'Exploring a Victorian Suburb'.

On Sunday August 8<sup>th</sup> at 2.00pm, Doug Harwood will be leading a walk around The Bury Camp and Old Hays. Please telephone 2394168 for more information about these walks.

**Soon to come** - The Group's first book entitled 'The History of Ratby: No1' is now close to publication. More details will be announced shortly.

### Expert Patients Programme

You can also contact PALS about the new Expert Patients Programme which is a government initiative to help people living with long-term health conditions. The aim of the course is to help maintain health and improve quality of life. The courses are run by people who themselves have similar problems. The next course will be held in the evening at the Adult Education Centre at Hinckley College on Spa Lane, commencing on the 9<sup>th</sup> June, 2004.

This FREE self-management course can help by:

- Allowing you to try out new ways to manage your condition
- Helping to reduce pain, fatigue and depression
- Introducing you to new friends & increasing your confidence
- Improving your communication with health professionals

When asked for their comments on the course, patients reported:

- Feeling less isolated and having increased confidence
- Feeling able to take more responsibility for themselves.
- Making new friends and plans to keep in touch

To find out more information about these local courses and venues, or to sign up for a place, or find out about becoming a tutor, please contact Jane or Becky at the PALS Office at Hinckley Health Centre. Telephone no. 01455 441971 or email [pals@hbpct.nhs.uk](mailto:pals@hbpct.nhs.uk)

## Do you have a Relative Buried in Ratby Churchyard?

The parish church council is responsible for making sure the churchyard is a safe place to walk through, especially for children. Following a safety review we have identified a number of headstones which are a bit wobbly and need to be made completely safe.

The repair and maintenance of individual headstones is first and foremost the responsibility of the relatives of those buried. We would therefore ask all relatives of those buried in the churchyard to check the list below, to see if one of your family headstones is in need of repair. If one of your family headstones is listed and you are able to help with the cost, could you please contact David Willis on 239 0010. The average cost for each headstone repair is around £40 and maximum is £130. Thank you for your help.

|                   |              |
|-------------------|--------------|
| WILLIAM JORDAN    | 1913         |
| HANNAH MASON      | Date unclear |
| WALTER CAMPION    | 1927         |
| WILLIAM CUFFLIN   | 1928         |
| ? DUNMORE         | Date unclear |
| GEORGE JORDAN     | 1936         |
| GEORGE THORPE     | 1910         |
| JOSEPH HIRONS     | 1954         |
| WILLIAM BREWIN    | 1976         |
| SARAH COOPER      | 1947         |
| WILLIAM LEE       | 1941         |
| WILLIAM CHALKLEY  | 1945         |
| JOSEPH HENRY YORK | 1948         |
| WILLIAM GAMBLE    | 1921         |
| THOMAS GAMBLE     | 1925         |
| JOSEPH HARRISON   | 1890         |



## RATBY PHARMACY

58 MAIN STREET  
LE6 0LL

Tel. (0116) 239 3139

**DISPENSING, FAMILY HEALTH CARE  
and ADVICE, PHOTOGRAPHIC DEV.**

\*OPEN ; Mon.-Fri. 9am -1pm, 2pm-6pm\*

Saturdays 9am-12.30pm

COLLECTION of PRESCRIPTIONS from  
L.F.E. RATBY GROBY GLENFIELD SURGERIES

## WITH A SONG AND A SMILE



Following their excellent concert three years ago, the Ratcliffe Chorale is returning to the Parish Church for a concert on Saturday 12th June at 7.30pm.

They will be presenting their unique blend of choral classics and music from the shows and it will all be in aid of the Baldwin Narrowboat Trust (supporting holidays for the disabled) and ongoing church restoration projects.

Tickets are #5 and available from the Alliance and Leicester or from 239 3009.

Learn to Drive at

# FOWLERS

 School of Motoring 

All Levels of Tuition From  
**BEGINNER to MOTORWAY LESSONS**  
From Young to Old

Contact: **Pete Fowler** D.O.T. ADI

Tel: **0116 238 6165** Mobile: 07760 258700

## VILLAGE DIARY - 2004

The following details about planned events taking place in Ratby during June, July and August have been made known the WOT team.

There may well be other activities during this period that we have not been advised of.

### JUNE

|                      |         |                                  |                   |              |         |
|----------------------|---------|----------------------------------|-------------------|--------------|---------|
| Sat 5 <sup>th</sup>  | 10.00am | Coffee Morning                   | Methodist Church  | Chapel Rooms | 2386276 |
| Wed 9 <sup>th</sup>  | 7.45pm  | Animals In Pastel                | Women's Institute | Village Hall | 2392176 |
| Sat 12 <sup>th</sup> | 10.00am | Coffee Morning &<br>Clothes Sale | Parish Church     | Church Rooms | 2393009 |

NB:- Coffee Mornings will usually be held at the Church and Chapel on most alternating Saturdays thereafter. See local notices.

|                       |        |                                             |                        |                      |         |
|-----------------------|--------|---------------------------------------------|------------------------|----------------------|---------|
| Sat 12 <sup>th</sup>  | 7.30pm | Charity Concert by<br>Ratcliffe Chorale     | Parish Church          | Parish Church        | 2393009 |
| Tues 15 <sup>th</sup> | 8.00pm | Talk - Postal<br>Services By Rail           | Village Society        | Village Hall         | 2387240 |
| Sun 20 <sup>th</sup>  | Tba    | Guided Walk Around<br>Highfields, Leicester | Local History<br>Group | Meeting Point<br>Tba | 2394168 |
| Sat 26 <sup>th</sup>  | 2.00pm | Garden Fete                                 | Parish Church          | Vicarage             | 2393009 |

### JULY

|                      |     |                                      |                   |     |         |
|----------------------|-----|--------------------------------------|-------------------|-----|---------|
| Wed 14 <sup>th</sup> | Tba | Outing                               | Women's Institute | Tba | 2392176 |
| Sun 18 <sup>th</sup> | Tba | Outing to Holenby<br>House & Gardens | Village Society   | Tba | 2387240 |

### AUGUST

|                       |        |                                       |                        |               |         |
|-----------------------|--------|---------------------------------------|------------------------|---------------|---------|
| Sat 7 <sup>th</sup>   | Tba    | Crow Pie Carnival                     | Ratby Co-op Band       | Ferndale Park | 2386954 |
| Sun 8 <sup>th</sup>   | 2.00pm | Guided Walk - Bury<br>Camp & Old Hays | Local History<br>Group | Plough Inn    | 2394168 |
| Wed 11 <sup>th</sup>  | 7.45pm | Parchment Craft                       | Women's Institute      | Village Hall  | 2392176 |
| Tues 17 <sup>th</sup> | 8.00pm | Talk - Leicester<br>Town Hall         | Village Society        | Village Hall  | 2387240 |
| Sun 22 <sup>nd</sup>  | Tba    | Cream Teas & Songs<br>of Praise       | Parish Church          | Church Rooms  | 2393009 |



Mobile Phone Top-Up  
Cards now available

Going Abroad? Don't  
forget we can offer  
the following

Remember you can cash  
cheques and make deposits  
for these Banks at your  
local Post Office

**RATBY  
POST  
OFFICE**

**VODAPHONE  
CELLNET  
T MOBILE  
ORANGE**

**Travel Insurance  
Foreign Currency  
E111 Medical Forms**

**LLOYDS TSB CO-OP  
A & L GIROBANK**

**Main Street  
Ratby  
239 3001**

*And we also sell stamps!!!*

## Keep Ratby in the News

You may have noticed that Ratby has not featured in the Community News columns in the Leicester Mercury recently. During the last four years I have acted as the correspondent for the village and over 400 stories have been published! However, I have now hung up my pen and the Mercury is looking for a Community News correspondent to replace me. The role involves pulling together information and stories about what is going on in the village, writing them in short reports and submitting them for publication.

I would like to thank everyone – particularly the village groups and societies – who have kept me informed while I have been correspondent. Anyone who is interested in taking on this role should contact Jim Matthews, the Community News Editor, on 0116 2224216.

## GARDEN GUARD 2004

It's that time of year again when we drag out the mower and hope it starts.

'Wait a minute, I'm sure I put it there last year. Mary, you haven't moved the mower have you? Oh no, someone's nicked it.'  
Sinking feeling in the heart.

How many of you have had to deal with that or a similar situation? Statistics show that if you live in the west of the county, there was 28% less chance of theft. This is because over the last 2 years the 'Garden Guard' Campaign has had positive results.

Since the increase in house security thieves are taking the easy option and breaking into sheds. What can you do?

- You can improve garden lighting, especially if your shed is at the end of a long garden.
- Fit a good quality lock with a close shackle.
- Fix an alarm inside your shed, or extend your house alarm.
- Fix ornaments and portable items to the ground.
- Put bricks inside pots to increase weight.
- Keep your gate locked.
- Old curtains in shed windows prevent thieves from assessing valuables.
- Property mark your equipment, especially valuables such as golf clubs and mowers.
- Paint items in hideous colours so that they cannot be sold on.
- Check that these goods are insured in your household contents... they may not be if your shed is left unlocked.
- Check out [www.thisismoney.co.uk](http://www.thisismoney.co.uk) or speak to your insurer.

Let's not make it easy for them. KEEP THEM OUT. You know it makes sense.

## HORSE HUT

All Your Horse and Riding Equipment  
Buy from the Winners!

Top Quality Saddles and Bridles  
Spring and Summer Clothing Here Now

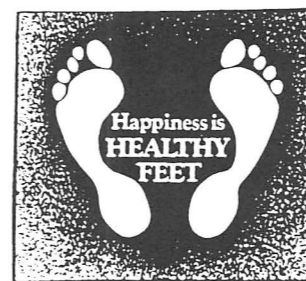
\*\*\*\*\*

89 MAIN STREET MARKFIELD  
Telephone 01530 244089 or  
e-mail; [sales@horsehut.co.uk](mailto:sales@horsehut.co.uk)

## THE SERVICE GARAGE

MAIN STREET, RATBY  
M.O.T TESTS  
CARS (PETROL and DIESEL)  
And  
MOTORCYCLES  
M.O.T. HOURS 9.00-4.15 Monday-Friday  
Closed for lunch 1-2  
TELEPHONE 239 4966

Peter Comley, MSSCh. MBChA.  
REGISTERED WITH THE HPC  
(Health Professions Council)



Visiting Chiropodist  
A Convenient & Professional Home  
Treatment Service – with over 10 years experience  
Tel: 01530 244887

## PICTURE FRAMING

LOCAL BESPOKE  
PICTURE FRAMING SERVICE  
FREE HOME COLLECTION, DESIGN  
AND DELIVERY  
GALLERY STANDARD  
at AFFORDABLE PRICES  
CALL CHRIS on 0116 287 0432 ANY TIME

DEADLINE  
AUGUST/SEPTEMBER ISSUE  
No 107  
FRIDAY 16<sup>th</sup> JULY

Editor 239 3367  
Adverts 239 3279  
Articles may be sent to 3 Ingle Drive LE6 0NN  
Phone 239 4873

## RECIPE RHUBARB and STRAWBERRY CRUMBLE

### Ingredients

1 Tablespoon sweet sherry or fruit juice  
½ lb (225 gr.) rhubarb  
½ lb (225 gr.) strawberries  
Sugar to your own taste

### Crumble

2 oz (50 gr.) plain flour  
1 oz (25 gr.) oatmeal or porridge oats  
1 oz (25 gr.) light soft brown sugar  
2 oz (50 gr.) butter or margarine

### Method

1. Heat oven to Gas 5/190 C/375F
2. Wash rhubarb and cut into even sized chunks
3. Cut large strawberries and leave small ones whole
4. Mix fruit with sugar and sherry or juice and place into 1 pint dish.
5. Place in pre-heated oven while preparing crumble.
6. Place flour, oatmeal and sugar into bowl.
7. Rub in butter until like fine bread crumbs.
8. Sprinkle evenly over fruit and return to oven to bake for 25-35 minutes until the crumble is crispy and golden.

Scrivener



**L** **MELSWAY**  
**DRIVING SCHOOL**  
Mel Shipley D.O.T. A.D.I. M.I.A.M.  
All ages welcome....and nervous pupils.  
Learn to Drive with MELSWAY.  
Telephone 238 6149  
3 Barton Close, Ratby.

**Castle**  
**Opticians**  
AN INDEPENDENT PRACTICE  
Eye Examinations  
Frames and Lenses at Competitive Prices  
Prescription and Non-RX Sunspecs  
Daily and Monthly Contact Lenses  
New Varilux Panamic Varifocals  
Any Optician's Prescription welcome  
NEW OPENING TIMES  
Monday-Friday 9.30-1pm 2-5pm  
Closed Wednesday  
Saturday 9.30-1pm  
47 Main Street, Kirby Muxloe  
Tel: 0116 239 4288