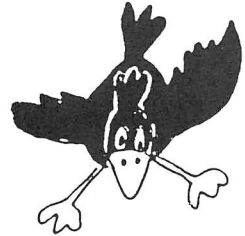


June 1997

Issue 64

# Wot! About Ratby



PUBLISHED BY THE RATBY SCOUT GROUP

## WOT CANOES ON THE WYE



The Ratby Group come ashore after completing the 30 miles to base camp on Bank Holiday Monday.

Eight young Ratby people took part in a 100 mile canoe test during the May Bank Holiday.

The event has been organised for 34 years by the National Association of Boys Clubs. This was the fifth time a group from Ratby has taken up the challenge.

The tradition began when Ray Lander introduced Ratby Scout Group to canoeing. The group forged links with Ibstock Boys Club, who had taken part in this event before. A second "canoe group" developed, with different young people getting involved each year. Some members have completed the 100 miles more than once!

This years challenge took place on the River Wye, and its tributary, the Lugg.

From the base camp at Ross on Wye, over 300 young people from all over the country set off each day to paddle a different stretch of the rivers.

Continued on 6 & 7

# The Best Value for Money in Audio Visual

### PHILIPS 34cm PORTABLE COLOUR TV

- Teletext
- Dark Hi Bri Tube
- On Screen Display
- On/Off Timer



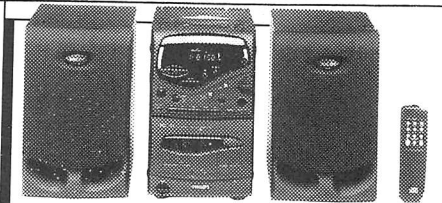
Model No. 14PT1532

£189.99 RRP £199.99

SAVE £10

### PHILIPS CD MICRO HI-FI SYSTEM

- CD Player
- 2 X 15 Watts RMS
- RDS Tuner
- 20 Presets
- Incredible Sound
- Remote Control



Model No. MC 150

INCREDIBLE ((SOUND)))  
£199.99 RRP £229.99

SAVE £30

### PHILIPS 51cm TEXT NICAM STEREO COLOUR TV

- Fastext System
- Blackline Tube
- 10w RMS Output
- 2 Scart Sockets
- Headphone Socket



Model No. 21PT5322/1

STAND INCLUDED

£359.99 RRP £399.99

SAVE £40

### PHILIPS TV/VCR COMBI UNIT

- 14" Colour TV
- Longplay VCR
- Videoplus Prog.
- NTSC Playback
- Full Remote



Model No. 14 PV162

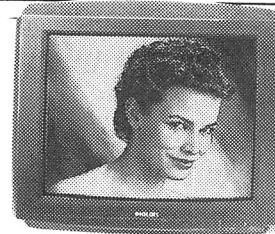
£359.99 RRP £379.99

ALL-IN-ONE COMBI

SAVE £20

### PHILIPS 59cm TEXT COLOUR TV

- Teletext
- Blackline D Tube
- Easy Logic Operation
- Auto Switch Off
- Scart Socket



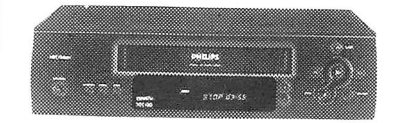
Model No. 25PT401

£379.99 RRP £409.99

SAVE £30

### PHILIPS NICAM STEREO VIDEOPLUS 4 HEAD VCR

- 8hr Longplay
- 8 Event Timer
- NTSC Playback
- 2 X Scart
- Auto Install



Model No. VR 665

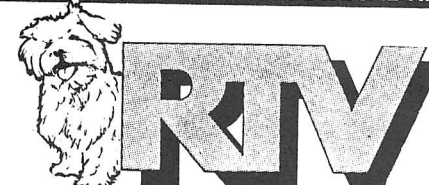
"BEST BUY"  
WHAT VIDEO MAGAZINE  
£299.99 RRP £349.99

SAVE £50

### † BUDGET SCHEME EXAMPLE:

Cash Price £299.99, Deposit £60.99, Balance £239.00, Monthly Payments £10.00, Total Credit Price £394.18. APR 27.8% (variable). Direct Debit. Credit Subject to Status. Licensed Credit Broker, written Quotations on Request.

### YOUR LOCAL INDEPENDENT ELECTRICAL RETAILER



23-27 Station Road, Ratby,  
Leicestershire LE6 0JQ

Tel: Leicester (0116) 2394544



**EURONICS**  
**CENTRE**  
EUROPE'S BIGGEST INDEPENDENT ELECTRICAL BUYING GROUP  
*The Power Behind the Price!*

We are an independent retailer – with friendly local service and personal attention – but we're also members of **EURONICS** – Europe's biggest independent electrical buying group, which means we can offer you the very best deals on the highest quality brand names!



A SENIOR'S SOLILOQUY

Methinks you are old enough to act your age. Time to desist from fostering fanciful notions.

Bring out your stick, shamle round the village, and for hours, sedentary on an uncomfortable bench, watch those who really live rocket by in their XR3s or GTIs. Or.....join the Evergreens.

Whilst in the evening slump in an introspective corner of the bar dumbly contemplating a half of Everard's draught.

Or, transformed into a couch potato, sit staring stupefied by soporific soaps until the world assumes square corners. Then on the morrow rise at crack of noon.... and start again.

**Pabari's Ratby News.**  
 5 Station Road, Ratby.  
 Tel. 0116-2393287

For the Largest Selection in Ratby of Beers, Wines and Spirits.

A vast choice of Confectionery and Soft Drinks.

A Large variety of Greeting Cards, Wrapping Paper and Stationary.

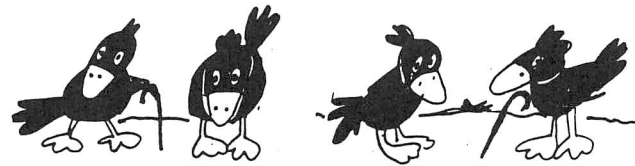
Newspapers & Magazines, Delivered to your door daily.

We are the agents for SKETCHLEY DRY CLEANING.

Video Rental & Photocopying also available.

Opening Hours:  
 Mon - Fri 6.15 am to 1 pm & 2.30 pm to 10 pm.  
 Saturday 6.15 am to 10 pm.  
 Sunday 7.30 am to 2 pm & 7 pm to 9 pm.

COME IN AND SEE FOR YOURSELF



**RAINBOWS CELEBRATE 10 YEARS OF GUIDING.**



Girls from 1<sup>st</sup> Ratby Rainbows joined together with other units from Markfield, Groby, Barlestone, Newbold Verdon and Sheepy Magna at Markfield Community Centre on May 10<sup>th</sup> to celebrate 10 years of Rainbow Guides.

The Girls participated in many activities the theme being Noahs Ark and a good time was had by all. During the morning Betty Stevens, the County Commissioner attended the party and collected hand knitted Mr & Mrs Noah and animals which were later donated to the Rainbow Hospice for sick children at Loughborough. She attended many parties during the day which were held around the county.

Rainbows is for Girls between the age of 5 and 7 years and meet every Thursday evening between 5.15 pm and 6.30 pm during term times in the School Hall. The Group was taken over in September by Mrs Marie Richards who has had many years experience with Kirby Muxloe Brownies. She is assisted by Mrs Kerry Bracciale, Mrs Julie Johnson, Catherine Leverton and myself. Anybody wishing to put their daughters name on the waiting list can do so by contacting Mrs Richards on 2392286.

Dawn MacLeod  
 Assistant Helper.

**QUALITY AT THE RIGHT PRICE!**

LAMBSKINS BOWRON

UNDERLAY £2.50 sq. yd.

TREASURE

Duralay

FREE FITTING

**Penthouse Carpets Ltd.**

AXMINSTERS SCOTCHGARD  
 TWISTPILE BERBERS  
 SAXONY HUEGA TILES  
 SCULPTURED CUSHIONFLOOR  
 FLOTEX

GEORGIAN CARPETS ANTRON®  
**STAINMASTER**  
 CARPET CERTIFIED BY DU PONT

Thousands of Patterns to choose from  
 £3.99-£45.50 sq. yd.

**NEW! Scotchgard STAINRELEASE**

**Armstrong NAIRN**

**SHOP AT HOME SERVICE PORTER'S DISCOUNT CARPETS**

121/3 STATION ROAD  
 RATBY, LEICESTERSHIRE  
 Tel: 2393238/2395202

**Free 1st Hour**

**Melway Driving School**

**Mel Shipley** D.O.T. A.D.I. M.I.A.M.

All ages welcome... and nervous pupils

Learn to drive with Melway

Telephone: 2386149  
 3 Barton Close, Ratby

**A. H. COLEY**

Plumbing & Heating Repairs,  
 New Installations, Bathrooms, Showers,

For a full range of services contact:

4, Saxons Rise  
 Ratby  
 Leicestershire LE6 0NF  
 Telephone: 0116-2394277

**DID YOU KNOW?**



*YOU have a*  
**LOCAL INDEPENDANT OPTICIAN.**  
**CASTLE OPTICIANS**  
47, MAIN STREET, KIRBY MUXLOE

We are an Independent practice and as a result we can supply frames and lenses by all the major manufacturers and therefore no dispensing is ever compromised by the inability to supply the latest hi-tech products.

Our own workshop speeds up the process

FREE NHS EXAMINATIONS FOR EXEMPT GROUPS  
Free Glasses with Voucher

Why travel into town?

Easy Parking

Give us a try

No obligation Quotes

QUALIFIED LOCUM OPTOMETRISTS

**ALWAYS**  
**10% DISCOUNT**  
**FOR**  
**SENIOR CITIZENS**

CHILDREN ARE ESPECIALLY WELCOME (PLAY AREA)

PRESCRIPTION SUNGLASSES £55  
STANDARD: SINGLE VISION LENSES

Feel free to browse.  
For an appointment ring **DONNA** now  
**0116 2394288**

## KEN TOMKINS

*General Builder*  
*Alterations and Extensions*  
**PROPERTY REPAIRS**

93 Gynsill Lane, Anstey, Leicester  
Telephone: 2871698

**PIP'S**  
♦ PRIVATE HIRE ♦ COURIER ♦ AIRPORTS ♦  
**2393-818**  
♦ RATBY ♦ LEICESTER ♦



### SHARING AND CARING

For several years the Ratby Methodist Church and the Anglican Church have held a monthly joint service, alternating between the two churches, as an exercise in Christian Unity. This will be put fully to the test during the next few months while the Methodist chapel undergoes some major rebuilding alterations and improvements - including a ramp for wheelchair access. During this period, which commenced in mid April, the Methodists are the guests at the church on the hill where they are sharing their traditional form of worship at the morning service on the second and fourth Sundays of the month, and in the evening on the first and third Sundays. No compromises have been made because the normal Anglican services are taking place every Sunday at 8.00 am; on the first and third Sundays at 10.30 am and on the second and fourth Sundays in the evening. The two Sunday schools have joined up in the Parish Room and move over to the church for the latter part of the morning services. A joint family service is held at 10.30 am on the first Sunday in each month.

Not everyone welcomes changes, however temporary, but this is a real opportunity to, possibly, banish many misconceptions and misunderstandings between two different denominations and to demonstrate to the world that a spirit of tolerance, forgiveness and love is at the heart of the Christian life. When our Methodist friends eventually return to their refurbished building we trust that a sense of greater unity (not uniformity) and enlightenment will have been firmly established and both of our traditions have been enriched in the process.

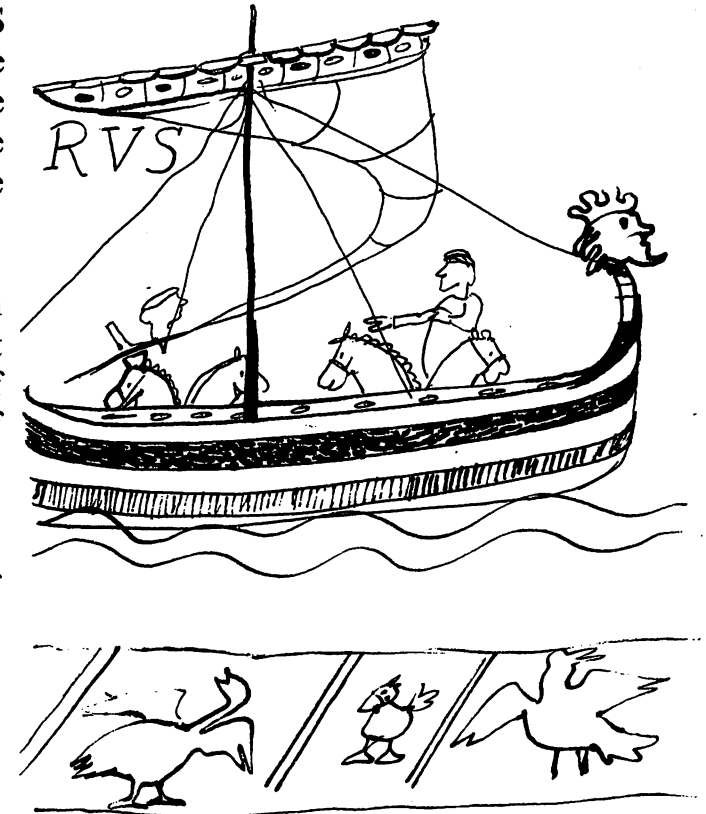
## Ratby Village Society

'Some Brief Glimpses of Northern France' was the title of the slide show given by RVS member Hoz at the March meeting. Firstly we were transported to the Pas de Calais by le Shuttle car train with an overnight stay at the small seaside resort of Wimereaux before returning next day again through the Chunnel.

Then a longer journey, by ferry from Portsmouth to Cherbourg, and a longer stay first visiting the incredible 11th century basilica of Mont St. Michel, perched high up on a cone of granite just off the Normandy coast, understandably France's greatest tourist attraction. This was followed by trips to Granville, the quaint medieval walled town of Dinan and the port of St. Malo. Three quarters of the latter's old town had been destroyed by allied bombardment in 1944 and since completely rebuilt to match the original!

The 900 year old tapestry at Bayeaux, some 220 feet long was inspected - but not photographed - and the adjacent Norman Gothic cathedral admired. Pilgrimages then to Arranches where some of the Mulberry floating harbour caissons are still to be seen. When in operation it was as large as the port of Dover, landing 2½ million men, ½ million vehicles and 4 million tons of supplies in the first three months after the invasion - and also to Bénouville where the first British glider troops captured the strategic bridge over the Caen Canal on 6th June 1944. The USA airborne troops took St. Mére Église on the same day and a dummy parachutist hangs from a pinnacle of the 13th century church to commemorate an actual episode in the battle.

Finally, before the return voyage from Cherbourg, a call was made at the delightful fishing village of St. Vaast la Hogue with plenty of scope for the Hoz camera.

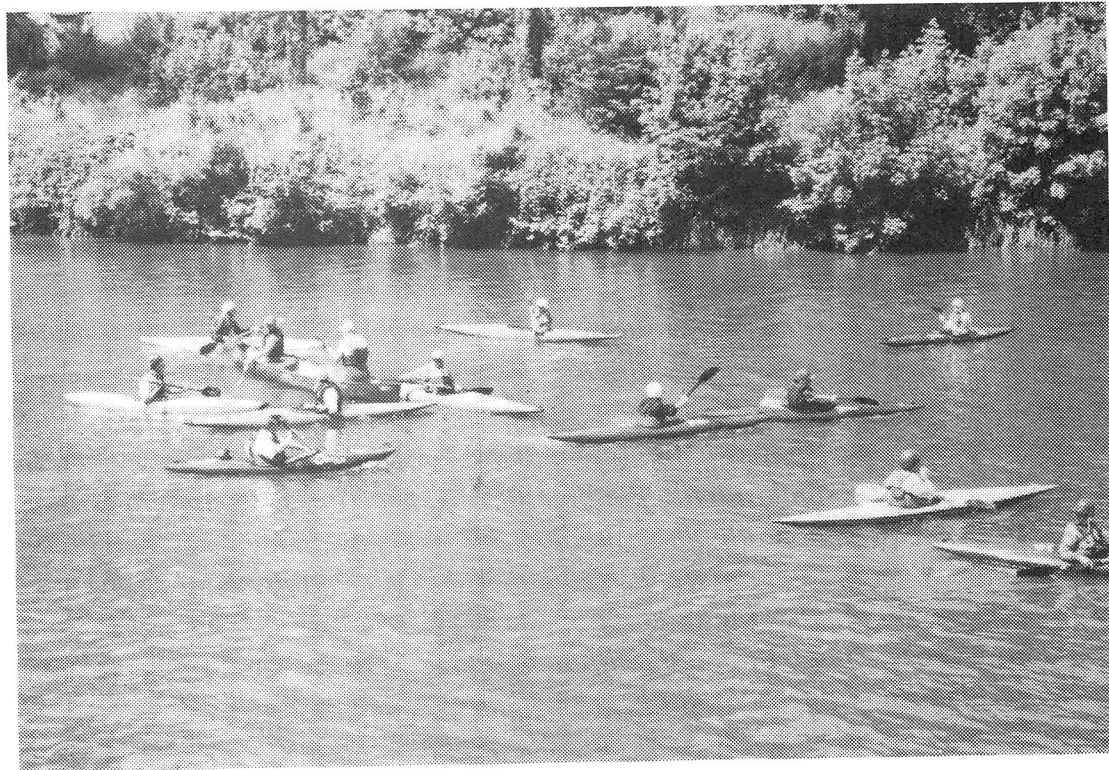


Something rather different was the fare at the April meeting when Mr Mike Palmer, from Braybrooke, gave us a selection of his cine films taken in Great Britain which had the added pleasure of music and recorded commentaries. We first saw charming Rutland towns, villages and the reservoir (recently in the news for gaining independence from Leicestershire on 1st April); followed by Cambridge; the Devon donkey sanctuary; Totnes Elizabethan Market; Leeds Castle in Kent; from the source of the Wharfe to Grassington when the camera followed Mr Palmer's son cycling the route and finally mountain winter walks in the Lake District as seen and described through the eyes of a pair of walking boots! The photography was clever in the extreme and the commentary witty and amusing. I'm sure we shall want to see more of Mr Palmer's art as a film maker in future.

Sponsored by **Gas Appliance Services - Leicester**

6 Saxons Rise, Ratby, Leicester LE6 0NF.  
Tel: Office 0116-2393662





The Ratby/Ibstock team wait for their turn to shoot the rapids at Symonds Yat.

## The 100 mile canoe test itinerary

- Day One:** Glasbury to Byford. 24 miles on the river Wye
- Day Two:** Byford to Hoarwithy. 27 miles through Hereford, on the Wye
- Day Three:** Morton to Lugg to Ross on Wye. 30 miles on rivers Lugg and Wye
- Day Four:** Ross on Wye to Monmouth. 19 miles through Symonds Yat. Finishing at Monmouth for the presentation of certificates.



A spectacular scene as over 300 canoeists race to the 100 mile finishing post at Monmouth Rowing Club.

The Ratby team claim to have been the fastest on the river.....They started second to last on the first day and finished up the first to complete the first days section! Some of the canoes used by the group have been bought with funds raised by this magazine.


On the last day the teams set off from Ross to paddle the final 19 miles to Monmouth, shooting the rapids at Symonds Yat on the way.

It was a spectacular end to the thrilling four days when the brightly coloured teams paddled en masse across the 100 mile post at the finishing line.

Congratulations to the Ratby team: David Payne, Yousaf, Maryam, Sarah and Ben Mirza, Greg Brookes, Amy Boud, and Shelley Gant. The highest accolade must go to the Payne family, Carol, Colin and David. They have given up their own time over many weeks to organise training sessions and were the support team during the event!

The achievement of all the young people is a tribute to their hard work and commitment!

**ALPINE CLEANING SERVICES**



OFFICES : CARPETS  
THREE PIECE SUITES  
VENETIAN BLINDS  
BUILDERS CLEAN ETC

Geoff Wood

111 Stamford Street, Ratby, Leicester LE6 0JU  
Tel: 0116 - 2388396 Mobile: 0860 267141

**GAS APPLIANCE SERVICES**

- Appliance Servicing and Installation
- Breakdown and Repair Services
- Plumbing and Heating Installation
- Kitchen & Bathroom Design and Installation
- Quality Guaranteed by Experienced Engineers



**YOUR DOMESTIC GAS BOILER SERVICED**

6 SAXONS RISE, RATBY, LEICS. LE6 0NF  
Tel: 0116 2393662

**£25 + VAT**

**THE SERVICE GARAGE**  
MAIN STREET RATBY

**M.O.T. TESTS**  
**CARS (PETROL - DIESEL)**  
and  
**MOTORCYCLES**

M.O.T. HOURS 9.00 - 4.15 Monday to Friday  
(Closed for lunch 1 - 2)

Telephone (0116) 2394966

**JULIE'S**  
HAIRDRESSING

MAIN STREET, RATBY

**Traditional & Modern Styling**

Telephone: 2392406

**Cottage Craftsman**  
General Builders and plan drawers

Extentions to Kitchens, Lounges, Garages, single and double storeys ALSO ~ Garden walling ~ ~ Ceramic wall and floor tiling ~ Replacement, windows, softwood, hardwood or UPVC ~ Patios ~ Block Paving ~ Fencing ~ UPVC fascia and soffit board renewals ~ Plans drawn and submitted to local authority approvals.  
For Prompt attention / Over 20 yrs exp  
Tel (0116) 2387325 Mob (0802) 728031

**RATBY POST OFFICE**  
Main Street Ratby

**Newsagent Confectionary Tobacco**

PHOTOCOPY SERVICE GREETINGS CARDS  
HALLMARK, RUSTCRAFT ETC.  
SHOE REPAIR AGENTS  
Open 7 Days  
Tel. 2393001



**FREE FREE FREE**

Your chance to help  
The Scouts require a Secretary  
Our current one is going on a year long Walk  
About.  
Duties:- To take and prepare minutes monthly  
To write a few letters now & again.  
All interested parties please ring:-  
Colin on 0116- 2395187

**Scout Rummage Sale**



Welfare Hall

Saturday 16th August

between 2.00 and 4.00 pm

20p entrance fee

Any Rummage, phone 2395187

JAZZ IN THE GARDEN  
by  
**THE  
STACKYARD  
STOMPERS**

Traditional Jazz Band  
**Ratby Vicarage**

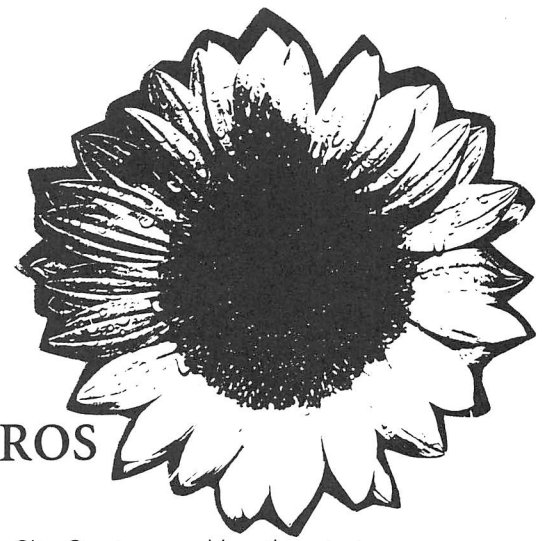
**Sat. June 14th 1997**  
AT 7.30 PM

BRING YOUR OWN CHAIRS, PICNIC ETC.

TICKETS:  
£5.00 IN ADVANCE  
£6.00 ON NIGHT  
FROM:  
15 GROBY ROAD, RATBY  
0116 239 3009



**Sunflower Appeal**



**Wear a "new Sunflower" and Help LOROS**

LOROS will launch a New Sunflower Appeal on 31st May in Leicester City Centre, marking the start of the National Hospice Sunflower Campaign to be held throughout June. LOROS has 70,000 New Sunflowers to sell through Shops, Offices, Schools and Street Collections countrywide.

Carole Wood, Director of Appeals said "Local people are so generous and we know they will want to wear a New Sunflower to show they care about the Hospice. LOROS needs to raise £1.4 million this year alone to fully finance the specialised Hospice services given **free of charge** to many hundreds of terminally ill patients and their families. The New Sunflower Appeal will lift the profile of LOROS and raise much needed funds towards the work of the Hospice".

**Wear a Sunflower and join the LOROS Sponsored Sunflower Walk on 15th June**

To help us with our New Sunflower Campaign and join our sponsored Sunflower Walk, please contact John Cavanagh and Janet Griffin, Community Fundraisers at the LOROS Appeals Office telephone 0116 255 5530.

**RATBY CHEMIST**

58 MAIN STREET, RATBY, LEICESTER, LE6 0LL

TEL: (0116) 239 3139

RESIDENTIAL & NURSING HOME SERVICE  
PATIENT RECORDS  
DISABLED LIVING PRODUCTS  
TRUSSES HOSIERY  
PET REMEDIES HORSE REMEDIES  
FIRST AID SUPPLIES

OPENING HOURS  
Monday 9.00am - 6.00pm  
Tuesday 9.00am - 6.00pm  
Wednesday 9.00am - 6.00pm  
Thursday 9.00am - 6.00pm  
Friday 9.00am - 6.00pm  
Saturday 9.00am - 1.00pm  
Sunday CLOSED  
Closed for lunch 1.00pm - 2.00pm

NON-PRESCRIPTION MEDICINE SALES  
FAMILY TOILETRIES BABY NEEDS  
ORAL HYGIENE  
COSMETICS & SKIN CARE  
SUNCARE & HOLIDAY NEEDS  
VITAMINS & HEALTH FOODS

**COLLECTION & DELIVERY SERVICE AVAILABLE**

**Ask your Pharmacist.  
You'll be taking good advice.**

SUPPORT  
YOUR LOCAL  
PHARMACY

**C. GEARY & SONS  
THE CHAMPION BAKERS**



**Geary's Bakeries**

SEE and TRY our range of ;

- 66 Varieties of Bread
- 34 Varieties of Cobs, Rolls, etc.
- 200 Varieties of Cakes and Pastries

- 'RUSTIC' WHOLEMEAL ALLINSON
- HOVIS BEER BREAD & COBS
- SUN LOAVES
- FANCY COBS REARSBY HEALTH BREAD
- SESAME COBS & BAPS
- FUDGE MALT BREAD
- SPEKLE 'HIGH FIBRE' BREAD FARMHOUSE LOAVES
- COTTAGE LOAVES
- MAIT CRUNCH BREADCOBS CHEESE & ONION BREAD
- WHITE & BROWN COBS and ROLLS & TWINNIES
- FILLED COBS

VISIT OUR OLDE WORLDE SHOP  
WEDDING, CELEBRATION & NOVELTY CAKES OUR SPECIALITY  
C GEARY & SONS STATION ROAD, RATBY LEICESTER 2386600



## LIBRARY SERVICES FOR RATBY

Following Local Government Reorganisation, Leicestershire Libraries have realigned their structure in order to minimise overheads, and to maximise the resources available for service delivery.

The new structure also recognises the need to deliver the best possible service as locally as possible.

Val Plant and Angela Hall job-share the Group Librarian post for Earl Shilton, Desford, Newbold Verdon, Barwell, Ratby, Groby and Markfield Libraries. They are based at Earl Shilton Library (tel: 01455 842467).

Jackie Timson is the librarian who has direct responsibility for library services for Ratby, Groby and Markfield. Her base is Groby Library, tel: 0116 287 6949.

Together, all the staff throughout the group of libraries are working hard to improve library services - and have already increased the circulation and exchange of bookstock.

## NEW OPENING HOURS

The number of opening hours has had to be reduced to secure a budget saving, but at the same time a fresh look has been taken to ensure that libraries open when most people can use them. A major change is opening until 8.00 p.m. one evening per week.

New opening hours for Ratby Library are:

Mon		2.00-5.00 p.m.
Tues	Closed	
Wed		2.00-8.00 p.m.
Thur		10.00 a.m. - 12.30 p.m.
Fri		2.00-5.00 p.m.
Sat		9.30 a.m. - 12.30 p.m.

For further information, contact Angela Hall or Val Plant at Earl Shilton Library, tel: 01455 842467.

The toy bear has  
been taken home at last.  
But little white rabbit is  
still waiting for her  
owners in the  
library



**RATBY LIBRARY**  
Main Street  
Ratby  
Leics LE6 0LL

Tel: 0116 239 4530

DEADLINE FOR LETTERS ARTICLES  
AND  
ADVERTS FOR THE  
AUGUST EDITION  
OF WOT!  
IS THURSDAY 24th JULY 1997

EDITOR 2393367  
ARTICLES 2394873  
ADVERTS 2393279 or 2394873  
LETTERS ETC. TO THE LIBRARY,  
3 INGLE DRIVE or 10 GROBY ROAD.

The views expressed are the views of individual contributors and do not necessarily reflect the views of the publishers.

The inclusion of an advertiser in the magazine does not imply recommendation by "WOT" or its organisers

Should you want to see your own typing in print. Articles for "WOT" should be typed in 3½ inch columns. Both left and right justified.

## HIS & HERS



**LADIES & GENTS HAIR DRESSING**  
OAPs welcome any day at reduced rates

**STYLING BLOW DRYING  
COLOURING SETTING  
TRIMMING PERMING**

**Tuesday to Saturday**  
6.00am - 5.30pm Tuesday to Friday  
6.00am - 12.30 Saturday

Appointments not always necessary

156 Station Road Ratby  
Tel 2394429

## DATE SLICES

### INGREDIENTS

#### Topping

7oz (200gr)	Self Raising flour
6oz (170gr)	Caster Sugar
6oz (170gr)	Margarine
4oz (115gr)	Rollled Oats

#### Filling

6oz (170gr)	Dates - chopped
1oz (30gr)	Caster Sugar
4 tablespoons	cold water
1 teaspoon	vanilla essence

### METHOD

- Put filling ingredients into saucepan and cook gently until thick. Then beat until smooth and allow to cool.
- Rub fat into flour - add sugar and oats and mix well.
- Put generous half into greased shallow tin (approx. 12" x 8") to well line the base.
- Carefully spread filling evenly on top then cover with remaining oat mixture and press to level.
- Bake in middle of oven Gas 4 Electric 350°F 180°C for approx. 45 minutes to golden brown.
- Cut in fingers when cool.

Note: You can use dried apricots in place of dates.

