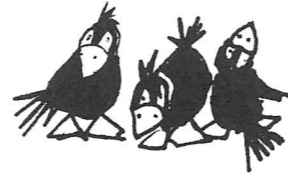




WOT!

About Ratby

PUBLISHED BY RATBY SCOUT GROUP



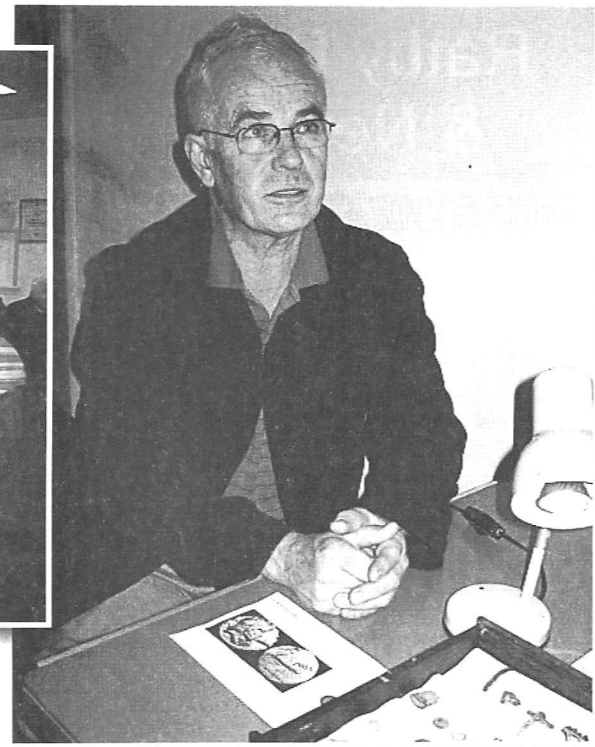
LIVING IN A BOX

Around thirty villagers were treated to a fascinating talk at the November 25th meeting of Ratby History Society. Brian Johnson, who had himself grown up in a Leicester prefab in the 1950s, enthralled us with his memories and slide show illustrating the history of this temporary housing solution. We discovered that many of the prefabs were built in steel recycled from the remains of war time planes that remained unfinished or had crashed. The prefabs were manufactured in sections, with back to back bathrooms and kitchens to make plumbing more efficient. There was heating, and even a built in fridge!

For many families used to slum dwelling conditions in the City these new homes were an undreamed of luxury. And this was the case too for Ratby families who moved into the new prefabs in Charnwood. Michael Ball ended the evening with some fascinating anecdotes from villagers who, as children, delighted in the pleasures of fitted bathrooms and electric lighting for the first time in their lives.



Doug Harwood introduces the evening



Neil Glennister with artefacts he has unearthed in the area

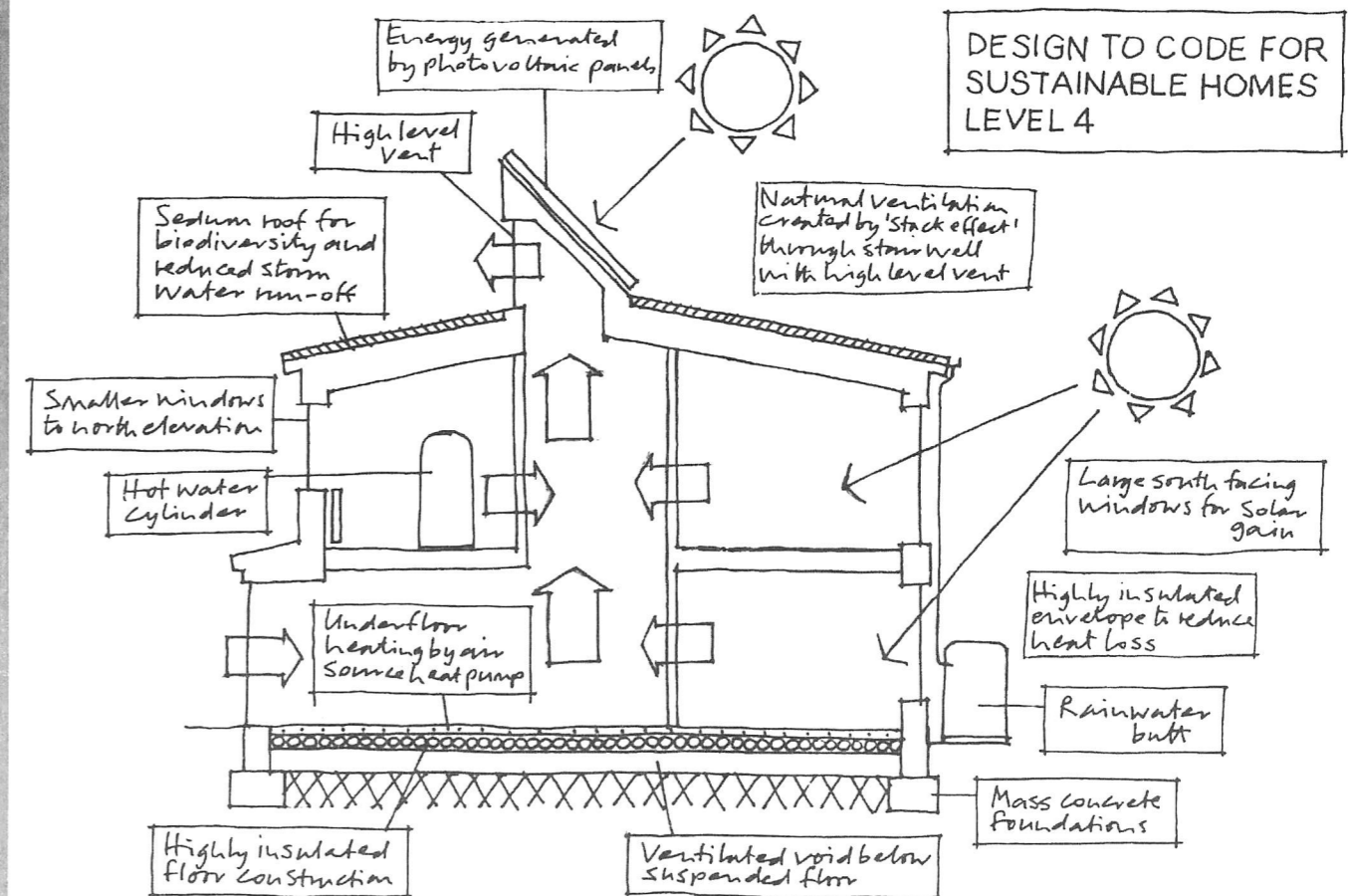
Turn to page 4 for an article by Ratby History Society on one of Ratby's new name plaques.



FIELDING MEADOW

OFF FIELDING LANE, RATBY, LE6 0AS

New Showhome open 12-4pm Friday, Saturday & Sunday



FUTURE HOMES – AVAILABLE NOW

For further details please contact:
Cawrey Limited, Kirby Grange Farm, Taverner Drive, Ratby, Leicester, LE6 0HQ

Tel: 0116 239 0600

www.cawrey.co.uk
enquiry@cawrey.co.uk

RATBY VILLAGE SOCIETY

Meetings start at 8pm in the Village Hall, Main Street and are held on the third Tuesday monthly. Admission; Members £1.60, casual guests £2.50 and refreshments are included. Everyone welcome.

Tuesday 20th March – Brian Leader and Dawn Tudor talk on 'First Steps to Researching your Family History', including information on photo scanning and restoration. Please bring a notebook and pencil with you.

Tuesday 17th April – 'The Secret Diary of Susiecue aged 65 ¾ Light hearted memories of a baby boomer as recounted in her inimitable style by Susan Heath.

Don't forget to sow your fruit and veg. in time for the Annual Show on Saturday 11th August!!

THANK YOU

Our heartfelt thanks go to Mrs Rachel Devereaux and Miss Jill Grey who have just retired from their voluntary posts as Wot delivery people after many many years of sterling service. We wish them a relaxing retirement.

Ratby Post Office & Newsagents

PHOTOBOOTH INSTORE

Only £8



Passport Check & Send

- ✓ Make sure your form's correct
- ✓ Applications despatched by Special Delivery
- ✓ Priority treatment provided
- ✓ Track your application online

30 Main Street - Tel: 2393001

Shop Hours: Mon to Sat 6:00am - 5:30pm (7:30pm Wed & Sat)
Post Office Hours: Mon to Fri 9:00am to 5:30pm Sat 9:00am to 12:30pm


LOCAL HOUSING NEEDS SURVEY

With this issue of Wot about Ratby you should have received an envelope containing an important Survey. This questionnaire is supported by Ratby Parish Council and the Borough Council. You may remember reading about this in your last issue of Wot. It is vital that we complete the survey so that housing needs can be assessed and appropriate housing provision made in the future. This is especially important for the elderly and young people who may be finding it hard to find suitable homes in the village. PLEASE take the time to complete the survey and share your views! There is a post-paid envelope for your reply enclosed. All information given will be confidential, seen only by the Rural Housing Enabler. Results will be available in late spring 2012.

YATRI PABARI

An apology to Yatri. Her website details were inadvertently omitted from the article in our last issue. For those fashionistas out there, take a look at;

www.wix.com/YATRIPABARI



OAKLANDS RIDING SCHOOL

WE CATER FOR EVERYONE FROM THE NOVICE TO EXPERIENCED RIDER

All weather riding area
Ring Julie on 238 7570

YOUR LOCAL ELECTRICIAN

PAULS QUALITY ELECTRICS

"Everything From A Blown Fuse To A Complete Re-wire!"

- Fuse Box Upgrades, Extensions
- Sockets, Lights, Heating, Fans, TV etc
- Burglar Alarms & Security Lights
- Safety Inspections, Landlord Reports
- Fault Finding, Testing & Repairs
- Also Property Maintenance.

Call Now For A FREE Estimate!
Office: (0116) 2872338 Mobile: 0798 0911 869
Website Address: www.pqelectrics.com

RATBY METHODIST CHURCH CHARITY EVENTS

Following the many events and celebrations for our Church's Centenary, we concentrate now on some events for the charity chosen for the two years 2010/2011 and 2011/2012, A.B.F. The Soldiers' Charity.

The events planned for 2012 are:-

Saturday 18th February at 10.00 am Rummage Sale

The church will be open on the Friday 17th from 4.30 pm to 6.00 pm to receive any donations you have.

Saturday 24th March at 6.30 pm Tramps Supper & Family Games

A hot supper will be served (much needed by a tramp!) and this will be followed by suitable games for all ages we can move around from where table.

A really fun evening for Admission by ticket only. Tel: 0116 2874042.



£5.00

Wednesday 25th April at 3.00 pm Beetle Drive



Come and enjoy an afternoon of fellowship at the Beetle Drive! No skill is required – just a sense of fun!

Thank you to those who have supported our events for charity over the last few years. We look forward to you sharing in our future events too.

Established 40 Years.

Glenfield Electronics

- Digital Aerials Fitted
- DIY Aerial Supplies
- LCD & Plasma service

We fit phone extension points

Tel: 0116 2517 533 www.glenfieldelectronics.co.uk

168 Fosse Road North, Leicester LE3 5ES

News from St Philip and St James

It seems a long time ago now, but we have memories of a very successful Christmas period at church. We had the usual extra services in church, being Christingle, Crib Service, Midnight Mass and Christmas Day, all of which were very well attended. It was nice to see so many new faces. Apart from these events we also joined in other gatherings in the village. We took part in the Radio Leicester 'Sing Christmas' at a local hostelry as well as singing carols around the Christmas tree. It was great to see so many people at these events and the general feeling was it was an increase in numbers compared with last year.

A new venture we started last year was to host a Sunday lunch on the last Sunday of the month. This is arranged with people who live on their own in mind. Transport can be arranged in most cases and a superb lunch is served in the Church Rooms along with time for socialising. We are planning to continue these through 2012 so if you would like further information please don't hesitate to contact Revd. Peter for more details. In the meantime the whole congregation from St PJ's wishes the readership of WOT a Happy, healthy and peaceful New Year.



Pabari's Ratby News. (Est. 25 years)
5 Station Road, Ratby, Leicester. LE6 0JQ.
Tel: 0116 239 3287.




We Deliver Daily, Evening & Sunday Newspapers.

A wide choice of Magazines, Greeting Cards & Stationery.

Sweets, Confectionary, Tobacco, Soft Drinks & Milk.

Top Up Your Mobile Phone, Electric & Gas.

A Vast Selection of Beers, Wines & Spirits

Play The National Lottery Here

Now!

Opening Times:-
Mon-Fri :- 5.00am to 1.00pm, then 2.30pm till 10.00pm
Sat:- 5.00am through until 10.00pm
Sun:- 7.00am to 2.00pm, then 7.00pm till 9.00pm






RATBY'S NEWEST NAME PLAQUES

Ratby Local History Group and Hinckley/Bosworth Borough Council have erected two new name plaques to help preserve Ratby's heritage at Church Farm Walk and The Stattie.



Photo: Church Farm in 1930. Note the box frame structure and thatched roof.

Church Farm Walk: runs from Church Lane to Ingle Drive. It marks the site of the former Church Farm, the oldest farm in Ratby, with records dating back to the 1530s when it was known as 'Rectory Farm'. It was originally under the control of Nuneaton Priory, which held Ratby church as one of its properties until the dissolution of the monasteries c.1538. The farm then came into the possession of Henry Grey, Lord of the Manor of Groby. It remained in the Grey Family until 1921 and was rented out to local tenant farmers, including John Lea at the time of Ratby's Enclosure Act of 1770. It was demolished in 1969 and replaced by the bungalows on Church Lane.

We will feature information about the second plaque, 'The Stattie' in our next issue.

**RESOLVED TO GET FIT?
Walking is the way forward!**

The Village Society has available copies of their inspiring lottery funded booklet; **Family Walks from Ratby**. You can start with just a half mile stroll around the village conservation area, and build up to an eight mile trek! The book is beautifully illustrated in full colour with original paintings by local artists from Ratby Art Class and would make a great coffee table addition if the walking defeats you!

The walk directions are simple to follow, and there are interesting snippets of information to entertain you en route.

Don't delay, order your copy for just £2 from the amazing people who wrote and compiled the booklet;

Chris on 239 0475, or Jane on 239 5350

GAS APPLIANCE SERVICES

0116 239 3662

Appliance Servicing and Installation
Breakdown and Repair Services
Plumbing and Heating Installation
Kitchen and Bathroom Design/Installation
Quality Guaranteed by Experienced Engineers



**YOUR DOMESTIC
GAS BOILER
SERVICED**

£35+VAT

WASSAIL

Ratby Community Orchard Group held the annual Wassail on Saturday January 14th. A group of us set off from The Railway to process noisily to the orchard, where we were joined by two families. This was the first time children had participated. The pub landlady and family, together with their dog Dora (another first!) also came along. This year we welcomed two visitors from Loughborough Transition Group who are hoping to establish a Community Orchard. Helen and her two Orphean Orchestra colleagues led the Wassail singing, and we toasted the trees in traditional style before heading back to The Railway to warm up and present the traditional offering of a candle-lit tray of evergreens and nuts to the landlady/hostess.

The Wassail bowl is filled with mulled cider.
Photo by Jack Haywood



HIS and HERS

LADIES AND GENTS

HAIR DRESSING

OAPs REDUCED RATES

Appointments not always necessary.

156 STATION ROAD, RATBY 239 4429

A STICKY SITUATION

I own a clever walking stick
never one to miss a trick!
Never there when e'er it's needed.
all my pleas will go unheeded-
please don't go away just yet
or you'll make me uptight get.
Loves to see me quite bereft,
fruitless search where last was left.
Left it on the patio?
No, not there when out I go,
nor beneath my easy chair.
In despair I tear my hair.
Try upstairs again once more.
No, not hanging on bedroom door.
Never take it to the loo,
what on earth am I to do?
No doubt in dark corner lurking
'cos I can really feel it smirking.
Once I 'hid' it in the larder.
(Mental note: You must try harder)
Once seen in umbrella stand
(deposit by my own fair hand?)
but, oh no, not today I fear.
I'll swear I heard that broly jeer
and the vibes from my frustration
being felt across the nation.
Whoops of joy echo around
when at last the truant found
hiding on hook 'neath hat and coat!
DON'T tell the others, they'll only gloat.

HG Jan. 2012

**YOUR LOCAL CAB COMPANY
NOW AVAILABLE**

GROBY CABS

**LOCAL & LONG DISTANCE
ANYTIME ANYWHERE**

**AIRPORT TRANSFERS
E.MIDS = £20.00**

PHONE:

0116

2 31 22 14

APPLE BARTON GINGERBREAD

Ingredients

225g (8oz) chopped apples
 1 tablespoon water
 85g (3 oz) butter
 175g (6 oz) syrup
 100g (3 1/2 oz) soft brown sugar
 150 ml (5 fl oz) milk
 1 beaten egg
 225g (8oz) plain flour
 2 teaspoons ground ginger
 1 teaspoon each of: mixed spice, baking powder and bicarbonate of soda.

Icing

100g (3 1/2 oz) icing sugar
 1 teaspoon ground cinnamon
 1 tablespoon warm water.

Method
 Preheat oven to 170C/Gas 3/325F

1. Put apples in pan with 1 tablespoon water and cook until soft.
2. In a pan, gently heat together butter, syrup and sugar until the butter has melted and all ingredients have combined well. Remove from heat and beat in egg.
3. In a bowl, sift the flour, ground ginger, mixed spice, baking powder and bicarbonate of soda. Stir the syrup mixture into this, followed by the cooked apples and mix well.
4. Pour into a lined tin and bake for 1 1/2 hours. Remove from oven and cool before placing on serving plate.
5. Sift the icing sugar and ground cinnamon into a bowl. Add warm water, stirring well to mix and pour over the cooled cake.

Graville



BIRDS!! Did you take part in the RSPB Bird Watch at the end of January? Write in and let us know what you spotted please. On two occasions this week (January 17th) we were entertained by 28-30 Goldfinches in our birch tree.

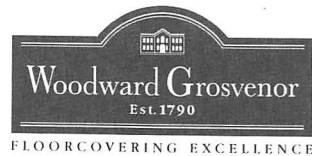


Porter's Discount Carpets

121/3 STATION ROAD, RATBY

TELEPHONE: 239 3238 OR 239 5202. MOBILE: 07860 551142

SHOP AT HOME SERVICE



NOW INCLUDING L.B.P. Tiling SPECIALISTS IN CERAMIC AND PORCELAIN TILING

LETTERS to the EDITOR



Dear Editor

Did anyone realise that Kreative Look Hairdressing Salon had been taken over by Whites of Glenfield two years ago? I certainly hadn't realised this. Neither had my husband who has used the salon for the past 3 years. I was given £20 worth of Kreative Look vouchers for my birthday, admittedly some time ago now, but since there was no expiry date on them I have not been in a rush to use them, until I noticed the fascia changing this month. I rang the salon to book an appointment. I was told by the salon that I would only be given 25% value of the original voucher. I was also told that Whites had actually taken over the salon 2 years ago. I decided to persist, and was told that Whites managing director would call me back.

I still felt confident that Whites would do the decent thing and honour the voucher, especially since I had intended to have my haircut and had hoped to become a regular customer. Unfortunately David, the managing director, did not seem to share the same view.

After considerable discussion, he was only able to offer me 50% of the original voucher's worth. His attitude towards me was also very dismissive, discourteous, and aggressive, bordering on rude. David finally said he would give me the previous owner's address and phone number and I could "pursue the matter with her".

I feel really disappointed and let down by White's unhelpful and aggressive attitude towards me. I believe that it was in their interest to honour the voucher at face value. £20 would hardly be missed by a successful hair salon such as Whites; however, it is of considerable value to me!

Incidentally I will not now be going to White's to have my haircut. My husband and son will not now be going to have their regular haircuts at White's either in view of my experience. So my message to White's, and in particular David, the MD, is that you might have saved yourselves £20.00, but you have lost much more in terms of future business, not to mention goodwill, from my family and friends.

Name and Address Supplied

The Managing Director of Whites response to this is on page 9.

The Plough Inn



BURROUGHS ROAD, RATBY, LE6 0XZ TEL: 0116 2392103
 JOIN US ON FACEBOOK PLOUGH INN RATBY



NEW FLEXIBLE SIZE & PRICE GRILL MENU

GAMMON AND RUMP STEAKS,
 MIXED GRILLS AND RIBS from 5oz-20oz
 FROM £3.95

BURGERS 4oz-12oz
 FROM £3.99

ADD A BOTTLE OF WINE TO ANY 2 MEALS
 FROM THE GRILL MENU FOR ONLY £6.00
 2 MEALS + WINE FROM £13.90

ADD CHICKEN STRIPS PRAWNS, STEAK,
 SCAMPI OR RIBS TO ANY MEAL
 FROM £2.99

SMALLER PORTION
 FROM £3.95

FISH DISHES FRESHLY
 BATTERED HADDOCK & SCAMPI
 FROM £3.95

2 MEALS
 4
 £10.00
 SELECTION

BAGUETTES, SANDWICHES
 OR TOASTIES
 FROM £2.95

HOMEMADE & VEGI DISHES
 STEAK PIE, LASAGNE, FRESH
 HAM & OMELETTES ...etc
 FROM £3.95

MID WEEK COLLECT & SAVE
 COLLECT 6 STAMPS MID WEEK IN
 ANY 2 WEEK PERIOD & EXCHANGE
 THEM FOR A FREE PINT OF YOUR
 FAVOURITE BEER.

SUNDAY CARVERY
 CHOICE OF 3 MEALS SERVED
 WITH ALL THE TRIMMINGS
 SMALL £4.75 MEDIUM £6.75
 SERVED EVERY SUNDAY 12PM-3PM
 PLEASE BOOK TO AVOID DISAPPOINTMENT



STAMP ISSUED PER PINT ORDERED
 MONDAY TO THURSDAY LUNCH & EVENING OFFER ENDS 31/3/12

FINE ALES - MARSTONS PEDIGREE, HOBGOBLIN, BURTON, BANKS, PLUS GUEST ALES
 DINE OUT: NO SHOPPING, COOKING OR WASHING UP!!!
**THE BEST VALUE MENU FOR MILES' WHY TRAVEL
 WHEN IT'S ON YOUR DOORSTEP - TEL: 0116 2392103**

Ratby Community Cinema

The Energize Youth Group Proudly Present
Ratby's Community Cinema *Free at Ratby
Church *Alternate Fridays for all the family.

Feb 3rd - The Smurfs (U)

Feb 17th - Marley and Me 2: The Puppy Years

March 2nd - Mr. Popper's Penguins (PG)

March 16th - Arrietty (U)

March 30th Rise of the Planet of the Apes (12)

Drinks and snacks from 6pm. **FILM STARTS at 6.30pm**

http://www.bradgateteam.org.uk/community_cinema.htm

Find our Facebook Group "Ratby Community Cinema"

RATBY NEIGHBOURHOOD WATCH COULD WE DO BETTER?

- Yes we could. If any of us sees something untoward going on we should not hesitate to call the police straightaway. It really is no good waiting a day or two before telling a third party because only the police can do anything about it.
- To make the most impact, please telephone Leicestershire police *during* the incident. If it is severe or you feel that your personal safety is threatened dial 999 and ask for the police. Otherwise dial 101. If you recognise any of the culprits and know their names and or addresses, please mention this to the police. Your personal details will not be disclosed.
- If you do not phone the police at the time, they do not know what is happening and cannot take action.
- So, let's resolve to do better in 2012.

Wot CROWS. WHY CROWS?

Newcomers to the village may have wondered why we feature funny little birds in the magazine. Ratby was nicknamed 'CROWPIE' in bygone days because crows were baked in pies here for the annual Statute Fairs. These took place on the area around the present day 'Stattie' and Burroughs recreation ground. There has always been a biennial CROWPIE CARNIVAL here too.



Wriggly Readers

Don't forget the baby and toddler story times at RATBY LIBRARY.

4th Thursday of every month

From 2.00-2.30 pm

For 0-4 year olds and their grown ups.

23rd February Spot, Kipper and Friends

23rd March Under the Sea



RATBY CHEMIST LTD.

58 MAIN STREET LE6 0LL

***FREE PRESCRIPTION COLLECTION SERVICE! ***

From surrounding surgeries.

JUST PHONE US ON 239 3139 with your requirements. We will process your prescription with the surgery.

All you do is COLLECT IT from us, or we can deliver to your home if needed.

You can e mail us with requirements;

Ratbychemisttd@aol.com

MELSWAY

DRIVING SCHOOL Est. 1991

Mel Shipley D.S.A. A.D.I. M.I.A.M.

Pass Plus Registered

***Complete Beginners* Part trained*
Motorway Tuition and Refresher lessons.**

Telephone 238 6149

3 Barton Close, Ratby.



JULIE'S

HAIRDRESSING

MAIN STREET RATBY

Traditional and Modern Styling

Telephone 239 2406

LETTERS to the EDITOR continued

Response to complaint "voucher issue" on page 7

I recall well the conversation with Mrs Name Supplied, and recall being taken aback by her aggressive, demanding nature and insistence upon her "rights". I would like to clarify various issues.

Whites Hair & Beauty began to operate the Ratby salon in November 2009, the £20 voucher having been sold by the previous business owner at some point before that date. ie at least two years ago

The change has been well publicised, with an extensive advertising campaign on local radio over the last two years, and in the Local magazines every month. I note that her husband and son used the salon, and for the past two years all the pricelists, posters and promotional materials have been branded Whites Hair & Beauty.

Although under no obligation at all to honour the voucher, as a gesture of goodwill I offered her £10.00 off her haircut, or 25% off any treatments, and this could well have exceeded the face value of the voucher. We have now changed the signage as part of a major refurbishment and re-launch of the Salon, which we have just completed. The launch evening of 17 January was a huge success with more than 80 clients joining us for a drink and nibbles. The salon is proving to be very popular and is attracting around 100 new clients every month.

This is part of a major investment in Ratby, which is providing local employment and training, as well as improving an important part of the village.

David White

To Friends in Ratby

At last we have moved to our new life in Horsham, W.Sussex after 33 years in Ratby. We've seen the estate extend over the years and lots of new young people with small children moving in. Roy & I have befriended SO MANY people over the time, it is going to be difficult to say, "bye" to everyone. We have both been involved with many groups in Ratby. Firstly, meeting friends at Chapel, then I was involved with the 1st Ratby Scouts. We have both been in the Royal British Legion where Roy has been Chairman, Poppy Organiser and the Standard Bearer. When Roy was Chairman, he planted two trees in honour of VE & VJ Days - at least his name will still be here! We also worked hard helping to start the new allotments in Taverner Drive and yet again we made more friends. We had laughs with the Orchard Group, especially when we went "a-wassailing" and the Apple Day. Roy helped clean out the pond so there could be "pond dipping" days. Over the years neighbours have often asked Roy



to help out one way or another. Be it something to be done in his garage or anything else, which he always did willingly.

It's sad that the groups are having problems with membership etc. Scouts need more leaders, and we will now need someone to take over our WOT delivery round and of course the RBL has closed. Maybe some of the young people will think about helping out and making new friends themselves.

We have moved down south to be near our daughter Mary and family. It will be SO different but we have ideas "up our sleeves". Roy has already "sussed" the Scouts out, found an allotment and there is a lot to be done in Mary's massive garden! I have met a lady at church in Horsham who was in my class at school (it's a small world!).

We are looking forward to our new life and we send everyone we know in Ratby, our best wishes and wish you all good health.

Gwen & Roy Holloway.

P.S. There is a young couple coming into our house, so please make them as welcome as you did us.

DEADLINE for issue 153

APRIL/MAY 2012

FRIDAY 16th MARCH

EDITOR 239 3367

ADVERTS 239 3279

ARTICLES 239 4873

Articles may be sent to 3 Ingle Drive

Or Email: sueboud@hotmail.com

Broken Games Console?

We specialise in repairing OUT OF WARRANTY consoles via our cost saving drop-in service.

IT'S EASY call **0116 286 6447**

or find us at the address below.

Once we've given you a quotation we'll get on with the repair and when we've finished you simply collect your console and pay!

www.ipaqrepair.co.uk

We repair the following...

PlayStation 3 • XBOX 360 • PSP

Nintendo Wii • Nintendo DS

Also... **Smart Phones**

iPhones • iPod Touch

5% discount with this advert



IPAQ Repair & Parts

Unit 33, King Street Buildings
Enderby, Leicester LE19 4NT

CONSOLE CLINIX

**iPhone & iPods
Parts & Repairs**