



WOT!

About Ratby

PUBLISHED BY RATBY SCOUT GROUP



RATBY TALENT ON SHOW

FIFTH ANNUAL ART EXHIBITION

This year's event, the fifth organised by the Village Society Anti-litter group was bigger than ever, with stalls overflowing the Church Rooms and into the church itself. It was held over two days, Saturday 5th and Sunday 6th November. There was a lively, buzzing atmosphere as people viewed the hand made gifts and work, or enjoyed the refreshments on offer. Some stalls promoted village groups, such as The History Society, with the latest edition of their History of Ratby Series, and the Village Society raising funds for next year's annual show.



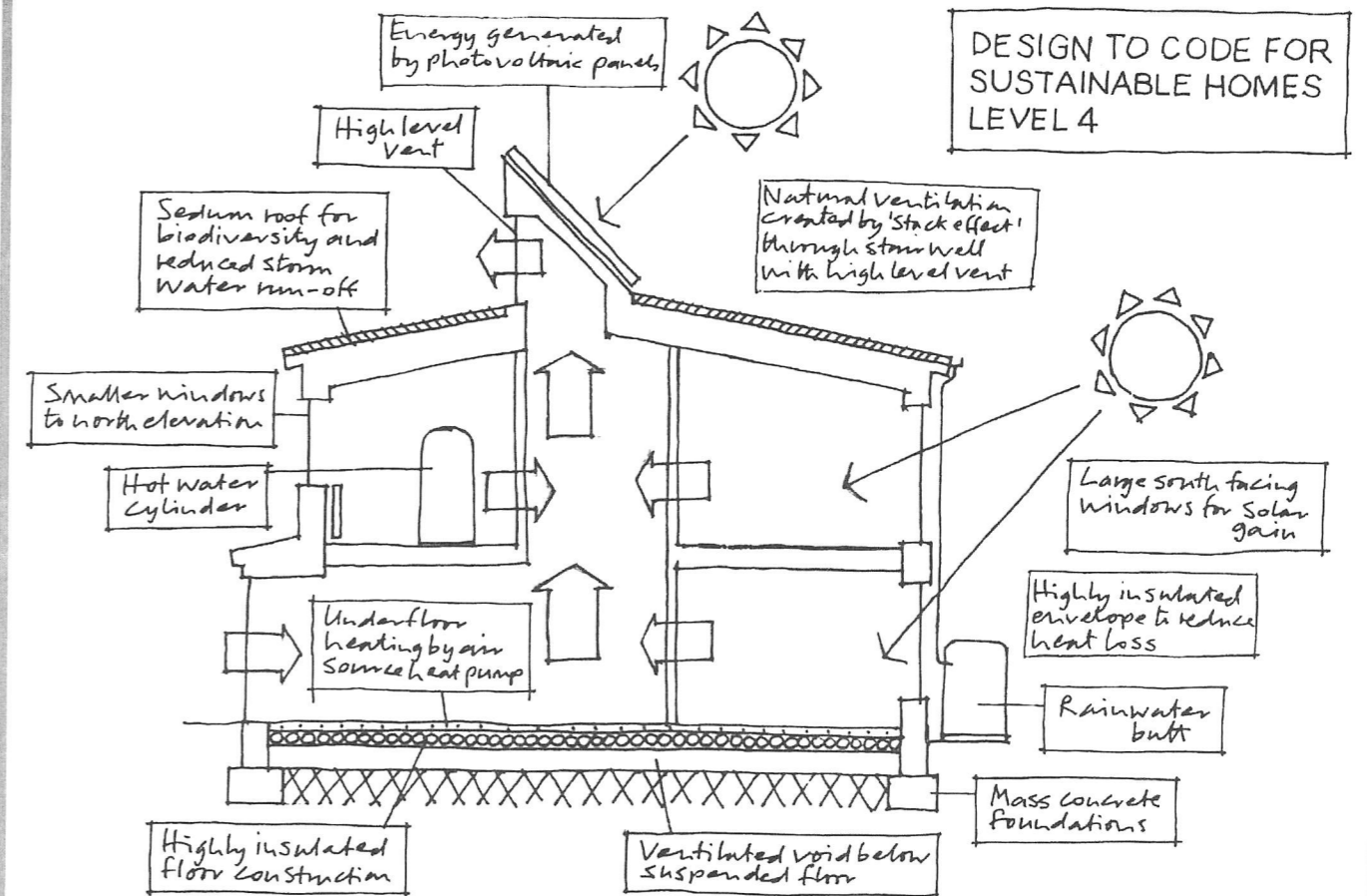
Turn to page 2 for a review of work in the exhibition



FIELDING MEADOW

OFF FIELDING LANE, RATBY, LE6 0AS

New Showhome open 12-4pm Friday, Saturday & Sunday



FUTURE HOMES – AVAILABLE NOW

For further details please contact:
Cawrey Limited. Kirby Grange Farm. Taverner Drive. Ratby. Leicester. LE6 0HQ

Tel: 0116 239 0600

www.cawrey.co.uk
enquiry@cawrey.co.uk

ANNUAL ART EXHIBITION

Michael Warr, local artist and author was the show's art critic, and here's what he had to say:

'The craft stalls were colourful and overflowing with items displaying skill and quality. A well presented art exhibition comprised a range of good quality work.

There was only one photograph exhibited, but of high quality. Titled 'Low Water,' by Hoz Gamble it depicted many boats which had been reduced to basic tones-very effective! A small gouache painting, 'White Cottage in Bradgate Park,' by Mary Hollinshead really caught my eye, full of charm and in the deco style. 'Household Cavalry Trumpeters' by Peter Griffin displayed good oil painting skills, while 'Hibiscus' by J Chesterfield showed good command of acrylics. PD Griffin's 'Guildhall Lane depicted excellent evening atmosphere in oils.

Watercolour; a difficult medium to use was well represented. Chris Talbot gave us 'Clearing Mists at Wells' and 'The Wildflower Meadow,' both full of freedom and atmosphere. 'Cotswold Village,' by Denise Williams displayed good use of line and wash. Jean Vann's well executed painting was an unusual view of Bamburgh Castle, and another eye catcher, because of clear, clean painting, was 'Morning Glory' by SK Mason.

It takes a great deal of courage to submit paintings to an open exhibition, and I congratulate everyone who did so! It was an excellent show.'

RATBY PARISH COUNCIL

Housing Need Survey

The Parish Council has agreed to carry out a Housing Needs Survey which will commence in January 2012 for a period of approximately 3 months. Every household will receive information and a questionnaire.

Skate Park

Provision of a skate park in Ferndale Drive has been approved, subject to planning permission and supplemental funding. The Parish Council has been successful in obtaining a £5000 grant from the Leicestershire County Council's Community Forum. The Council is also seeking to provide youth club facilities in the village. However, this is subject to negotiation with the Parish Church.

Zebra Crossing for Groby Road

Leicestershire County Council has approved installation of a zebra crossing to be placed on the speed table on Groby Road.

HM The Queen's Diamond Jubilee Celebrations.

The Council, with the co-operation and permission of St Philip & St James' Church will be lighting a beacon on the Church Tower on 4th June 2012.

13 Station Road, Ratby, Leicestershire LE6 0JQ Tel: 0116 239 0167
Email: ratbypcouncil@btconnect.com

Pabari's Ratby News. (Est. 25 years)
5 Station Road, Ratby, Leicester. LE6 0JQ.
Tel: 0116 239 3287.






We Deliver Daily, Evening & Sunday Newspapers.

A wide choice of Magazines, Greeting Cards & Stationery.



Sweets, Confectionery,
Tobacco, Soft Drinks & Milk.

Top Up Your Mobile Phone, Electric & Gas.

A Vast Selection of Beers, Wines & Spirits

Play The National Lottery Here
Now!

Opening Times:-

Mon-Fri :-	5.00am to 1.00pm, then 2.30pm till 10.00pm
Sat:-	5.00am through until 10.00pm
Sun:-	7.00am to 2.00pm, then 7.00pm till 9.00pm




Ratby Local History Group

The November meeting will take place at 7.30pm on Friday 25 November 2011 in the Village Hall, Main Street, Ratby, when Brian Johnson will give a talk on

"Living in a Box: the story of Leicester's Prefabs"

followed by a Ratby Short on:

"Memories of Ratby's Prefabs"

Volume 4 of "The History of Ratby" has been published and is dedicated to the memory of Dennis Green. This volume features more of Dennis Green's memories, together with fascinating articles on Ratby's lost yards, a history of the care of the poor and health and sanitation in the village.

It costs £10 and is available from **Ratby Post Office** (courtesy of Atul and Bhavna) and from members of the committee.

New Name Plaques: Ratby Local History Group and Hinckley/Bosworth Borough Council have erected two new name plaques to help preserve Ratby's heritage at Church Farm Walk and The Stattie.

YATRI PUTS RATBY ON THE FASHION MAP!

Yatri Pabari is making a name for herself in the Fashion World. She has been named 'Emerging Designer of the Year' at the Midlands Fashion Designer Awards. This follows her success in gaining the River Island Gold Award at Graduate Fashion Week. Yatri studied for her BA in Fashion Design at the University of Northampton, and she has been declared 'One to Watch' by the 'Fash Pack.'

It took her a year to produce the sparkling, winning collection. Designs included asymmetric leather jackets, and a fantastic circular sequin hoodie, all high end women's fashion.

She works in a room above her parent's Ratby Newsagent business, where she is producing garments for the orders which are flooding in from around the country.

Yatri's ambition is to develop her own independent fashion business. She says, 'I like doing my own thing rather than working as a designer for a bigger company.'

We have no doubt that she will succeed! Congratulations to this enterprising twenty three year old.

Check out her developing website:



A stunning design from the Midlands Fashion Design Award event.
Photo by Niki Lazaridou/Adam Fraise

YOUR LOCAL CAB COMPANY
NOW AVAILABLE

GROBY CABS

LOCAL & LONG DISTANCE
ANYTIME ANYWHERE

AIRPORT TRANSFERS
E.MIDS = £20.00

PHONE:
0116

2 31 22 14

★ **A. GOODWIN** ★

**CARPENTRY, JOINERY
And PROPERTY REPAIRS**

0116 238 7316
Or mobile 0777 987 2211

**FITTED KITCHENS/BEDROOMS,
BATHROOMS,
PLUMBING**

**TIMBER & UPVC WINDOWS, DOORS
and PORCHES**

**FENCING and GATES
DECORATING, FLOOR and WALL TILING**

PLASTERING and COVING

FASCIAS, SOFFITS and GUTTERING

SOLID and LAMINATE FLOORING

RADIATOR COVERS

**ALL PROPERTY MAINTENANCE and
REPAIRS**
NO JOB TOO SMALL

★ ★

The Plough Inn

BURROUGHS ROAD, RATBY, LE6 0XZ

TEL: 0116 2392103

 JOIN US ON FACEBOOK PLOUGH INN RATBY 

TRIBUTE NIGHTS

CHRISTMAS EVE

LADY GAGA TRIBUTE - £5 PER PERSON



NEW YEARS EVE

BLUES BROTHERS TRIBUTE - £7.50 PERSON



BOOK BOTH NIGHTS FOR ONLY £10 PER PERSON

ENTRY BY TICKET ONLY

2 GREAT NIGHTS FOR £10

KIDS EAT FOR JUST £1

FROM 6-7 EVERY NIGHT

Chicken Nuggets - Fish Fingers - Pork Sausage - Vegetarian Sausage

Served with Chips & Pea's (or Beans)

5' Cheese & Tomato Pizza & Chips

Kids eat for £1 only available between 6pm and 7pm every night when adults have a main course.

Kids under 12's only.

Sunday Carvery

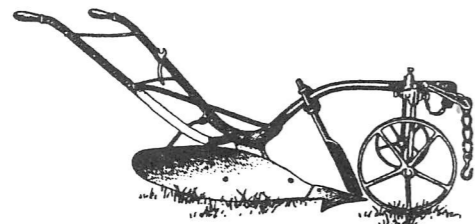
Small £4.75 - Medium £6.75 - Large £8.75

Choice of 5 Freshly Cooked Meats

Beef, Lamb, Pork, Gammon & Turkey

Served with all the trimmings Plus seasonal Vegetables

Available Every Sunday 12pm - 2pm



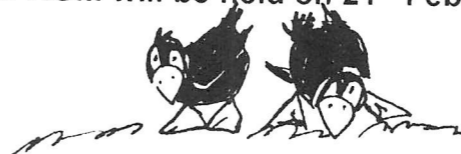
RATBY VILLAGE SOCIETY

Meetings start at 8pm in the Village Hall, Main Street and are held on the third Tuesday monthly, except for July and December when there are no meetings. Admission: members 31.60, casual guests £2.50. Refreshments included. Everyone welcome.

Tuesday 17th January 2012

Leicester's Lord Mayor, Cllr. Robert Wann will be interviewed by Andy Cereseto for the 'Personalities Revealed' evening to support The Royal Anglian Regiment Benevolent Fund. These funds are used to help the serving and former members of the Regiment and their dependents who are in need, hardship, or distress. Private Chris Grey of Ratby, a member of the Regiment, was tragically killed in action in Helmand Province on April 13th 2007. A picture painted specially for this evening's occasion by artist Peter Griffin will be raffled, with all proceeds donated to the fund.

Our AGM will be held on 21st February 2012.



Broken Games Console?

We specialise in repairing OUT OF WARRANTY consoles via our cost saving drop-in service.

IT'S EASY call **0116 286 6447**

or find us at the address below.

Once we've given you a quotation we'll get on with the repair and when we've finished you simply collect your console and pay!

www.ipaqrepair.co.uk

We repair the following...

PlayStation 3 • XBOX 360 • PSP

Nintendo Wii • Nintendo DS

Also... Smart Phones

iPhones • iPod Touch

5% discount with this advert

CONSOLE CLINIX



IPAQ Repair & Parts

Unit 33, King Street Buildings
Enderby, Leicester LE19 4NT

iPhone & iPods
Parts & Repairs

Spotting Nature in Ratby

Have you ever wondered what wildlife can be found in Ratby? Or perhaps you'd like to know what that species was you saw in your garden. A new web site run by local charity NatureSpot, can now help you with these questions – and much more.

NatureSpot is collecting records of the wildlife found in Leicestershire and Rutland. Working closely with the County Council's Environmental Records Centre, it encourages the public to submit records of any wildlife sightings to help build the knowledge-base of local wildlife. Only when we know what lives where can we ensure the proper decisions are taken to protect and conserve these species.

Thanks to the support of Ratby Parish Council, NatureSpot now has a dedicated Ratby section, showing images and lists of all the wildlife species seen so far within the parish. Nearly 800 species have been recorded so far and with your help this can keep growing. The Ratby NatureSpot section also shows a map of the parish showing 'wild places' – sites good for wildlife. You can click on any of these sites, Martinshaw Wood for example, to see more wildlife details.

NatureSpot's recording form is easy to use and allows photos to be uploaded with the sighting. So if you've seen an animal or plant and you don't know what it is, just take a photo and send it in for NatureSpot to identify it for you

The site also creates lists of everything you have submitted so you can easily keep a record of what you have seen in your garden or any other site. Records of all types of wildlife are wanted, including common species. We know surprisingly little about the distribution of species such as Hedgehogs and House Sparrows, once common their numbers are now falling and we need more information about local sightings.

NatureSpot is inviting all Ratby residents to find out about, and contribute to our knowledge of the wildlife in our parish. If you have a particular interest in wildlife and would consider helping to develop NatureSpot Ratby, please contact David Nicholls tel. 2393159 or dnicholls@naturespot.org.uk www.naturespot.org.uk/parish/ratby



OAKLANDS RIDING SCHOOL

WE CATER FOR EVERYONE FROM THE NOVICE TO EXPERIENCED RIDER

All weather riding area

Ring Julie on 238 7570

RATBY CO-OPERATIVE BAND

Ratby Senior Band have been placed highest in the Midland band section of the National Finals Contest recently. They will be competing in the L.B.B.A. Contest at Burleigh College in Loughborough on November 29th. We wish them luck.

As usual the various Bands are busy again in the lead up to Christmas and beyond. Here in Ratby they will be playing for the **Christmas Carols around the tree at 6.30 on December 21st**.

On February 12th at 7.30 in the evening the Senior Band presents their popular New Year's Concert in Ratby Church.

Looking further ahead all bands will again take part in the annual MUSIKFEST at Groby College, on April 20th and 21st.

Put the dates in your diary now!

At their Summer Prom Concert Long Service Awards were presented to;
Steve Plant for 50 Years with Ratby Band
Becky Moss for 25 years with Ratby Band
And Jo Coulton for 25 years in brass banding.
Congratulations to all.

11.30 Christmas Eve 1959. We're in the choir vestry putting on cassocks and surplices, peeking through the heavy brocade curtain at the steady procession of villagers stepping into the mulled warmth of the church, some stepping rather more gingerly than others, that third sherry taking effect in the cold night air. Above us the clunk of bell ropes hitting the floor and the muffled voice of Harold Spencer calling the changes. The peal comes to rest, replaced by a single tolling tenor.

The vicar looks in through the curtain, all dressed in white. 11.45. The organ sounds the first few bars of "Once In Royal David's City", the capacity congregation stands and we're off, trebles only first verse. My dad walking behind me, his hymn book closed and clasped to his chest - no need to see the words. Something magical about Midnight Mass, the lateness of the hour, the anticipation of Christmas, and the delight in seeing unfamiliar faces (unfamiliar to the church the rest of the year anyway) of the people filling the pews, even the ones over the far side where usually only Mrs Marriot sat, alone beneath the war memorial.

The Turning of the Year

The ritual rumbles on: carols, prayers, the familiar readings: "...and that same night there were shepherds abiding in the fields..."; "In the Beginning was the Word..." (never could figure that one out). An indescribable warmth, the occasional hacking cough; the long queue of the Faithful, Joyful and Triumphant, moves slowly to the altar rail as we sing "See Amid the Winter Snow" and "Silent Night". They are still queuing when we run out of carols and Mr. Winkless the organist improvises some vaguely Bach-like tones until the last communicant turns and unsteadily negotiates the steps down to the aisle. Throughout the service, latecomers stagger in, drawn one likes to think by the True Meaning of Christmas, greeted by George Taylor who no doubt assesses their condition and in some cases their ability to stand up. Occasionally someone discreetly makes for the door, overcome not by emotion but by the effects of 6 pints of Marston's Pedigree down at the Plough.

The service ends and with hushed, genuine warmth everyone wishes everyone else Happy Christmas. As we walk home up Markfield Lane, my mother wonders whether she should put the turkey in the oven tonight or get up early in the morning. In the distance we can hear the beautiful sound of Ratby Silver Prize Band; "In The Bleak Midwinter" drifts through the crisp cold air. Her favourite carol. Magic. Brings tears to my eyes even now.

New Year's Eve. The Social in the Church Rooms. Mrs Hulbert, her sister Clarrie, Mrs Barnes, her sister, and various other ladies sitting on benches at the top end of the room, where they have always sat whatever the occasion. Men in shirtsleeves take their partners for the Valeta, the Barn Dance, the Progressive Barn Dance and when things get wilder, the Lancers and the Gay Gordons. My dad is the M.C., ably assisted by George Taylor who operates the record player with Peter Flint. John Moore, one of the elite team of servers, whips up the chaotic musical game "All Fish Out to Sea" when if you played your cards right you could end up with a girl sitting on your knee.

"The next dance will be refreshments" announces George, as we all head for the kitchen where the aforementioned ladies serve sandwiches, cakes and pour tea from giant teapots.

Quarter to midnight, and across the road the bells are already ringing out the Old Year. We pile across to the churchyard, spooking the girls from behind gravestones, then through the slit of a doorway and up the wooden stairs to the Ringing Floor. If you were early enough you could get a place lining the walls directly behind the ringers, otherwise you stood on the stairs. George Taylor, Harold Spencer, the young George Hurd and others whose names I forget, sleeves rolled up, the faint whiff of their perspiration mixed with the heady perfume of Judith Weston standing next to me, the bells whirling to a climax as Harold calls the changes and the whole roaring din now cascading faster and faster, closer and closer, steadily getting quieter as the bells synchronised like a dying heartbeat, booming together quieter and quieter in a miraculous *diminuendo*, the ringers nudging their ropes hardly at all and then - stop. "Happy New Year everybody," said Harold to the beaming audience. Then a riotous tumultuous peal of joyous scales as we headed out into the night and the future.

Chris Garratt

PORTER'S DISCOUNT CARPETS

121/3 STATION ROAD, RATBY
TEL. 239 3238/239 5202
MOBILE 0860 551142

**Wishing all of our
Customers a warm
Happy Christmas**



MELSWAY DRIVING SCHOOL Est. 1991

**BEST WISHES for CHRISTMAS
And A HAPPY NEW YEAR**
From MEL to all past, present and future clients

Telephone 238 6149 3 Barton Close, Ratby.

JULIE'S HAIRDRESSING MAIN STREET RATBY

**CELEBRATING 30
YEARS IN THE VILLAGE**
Traditional and Modern Styling
Telephone 239 2406

RATBY'S 90 YEAR OLDS

Following an inspirational idea by Janet Gutteridge, a group of villagers decided to celebrate the lives of some of our oldest ladies and gentlemen.

Ratby Parish Church volunteers were more than happy to share their regular Saturday coffee morning, and so a special table was laid with cakes baked by volunteers, and everyone joined in with the entertainment. Pauline Johnson played well known tunes on harmonica, and danced a Charleston. Ken Hunnybun gave an excellent rendition of sea shanties, inviting everyone to join in the chorus.

Thanks to Ken, Pauline and Mollie Parish who were volunteer drivers, bringing people to the party, and to Win Baillie who donated cup cakes.

There are plans for a repeat in 2012, when there will be more villagers to add to the list. This year there were thirteen celebrants!



HIS and HERS

LADIES AND GENTS

HAIR DRESSING

OAPs REDUCED RATES

Appointments not always necessary.

156 STATION ROAD, RATBY 239 4429

2070 REMEMBERS

26 Cadets and members of Staff from 2070 (Glenfield) squadron, Royal Air Force Air Cadets attended the annual Remembrance Sunday parade held in Glenfield, along with other local youth groups. The parade began at the community centre where the cadets marched along Stamford Street down to the roundabout and into St Peter's Church.

The church service was conducted by Canon John Sharp with appropriate readings from the Squadron Padre, Sue Bradley. The service then resumed outside the church war memorial where an act of remembrance for those who have fallen took place – this included the laying of the wreath by SGT Zishiri followed by a 2 minute silence. The act of remembrance was finalised by the sounding of the last post.

The squadron banner was carried by CPL Holford with two escorts Cadet Day and Cadet Copley both doing it for the first time. The day finished with tea and biscuits at the community centre with some of the staff representing the Air Cadet Organisation at the Royal British Legion in Birstall later on. Officer Commanding, Flt Lt Mayoh-Smith commented that "It was nice to see a good turnout once again; it goes to show that as the years go by the support for Armistice Day is as strong as ever".

For more information about the squadron and the Air Cadet Organisation please visit www.2070sqn.co.uk



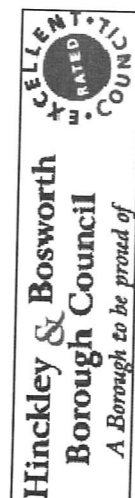
RATBY CHEMIST LTD.

58 MAIN STREET LE6 0LL

***FREE PRESCRIPTION COLLECTION SERVICE! ***

From surrounding surgeries.
JUST PHONE US ON 239 3139 with your requirements. We will process your prescription with the surgery.
 All you do is **COLLECT IT** from us, or we can deliver to your home if needed.
 You can e mail us with requirements;
Ratbychemistltd@aol.com

**IMPORTANT
PLEASE READ**



**Rural Housing
News
for
Ratby Parish**

CONTACTS

RATBY PARISH COUNCIL:

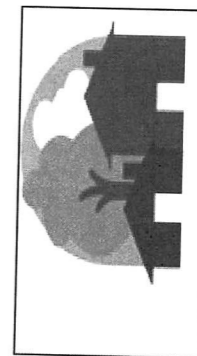
Mrs Linda Fogg
 Clerk to the Parish Council
 01162 390167

ratbypcouncil@btconnect.com

YOUR RURAL HOUSING ENABLER:

Richard Windley
 01530 276546

richard.windley@midlandsrh.org.uk



**YOUR PARISH COUNCIL
WORKING WITH
THE RURAL HOUSING ENABLER
AND
HINCKLEY & BOSWORTH
BOROUGH COUNCIL**



Some examples of affordable Rural Housing in the area



YOUR LOCAL ELECTRICIAN



"Everything From A Blown Fuse To A Complete Re-wire!"



- Fuse Box Upgrades, Extensions
- Sockets, Lights, Heating, Fans, TV etc
- Burglar Alarms & Security Lights
- Safety Inspections, Landlord Reports
- Fault Finding, Testing & Repairs
- Also Property Maintenance.



Call Now For A FREE Estimate!
Office: (0116) 2872338 Mobile: 0798 0911 869
Website Address: www.pqelectrics.com

Established 40 Years.

Glenfield Electronics

- Digital Aerials Fitted *retra*
 - DIY Aerial Supplies
 - LCD & Plasma service
- We fit phone extension points

Tel: 0116 2517 533 www.glenfieldelectronics.co.uk

168 Fosse Road North, Leicester LE3 5ES

GAS APPLIANCE SERVICES

0116 239 3662

Appliance Servicing and Installation
Breakdown and Repair Services
Plumbing and Heating Installation
Kitchen and Bathroom Design/Installation
Quality Guaranteed by Experienced Engineers



YOUR DOMESTIC
GAS BOILER
SERVICED

£35+VAT

**DEADLINE for issue 152
FEBRUARY/MARCH 2012
FRIDAY 13th JANUARY**

EDITOR 239 3367
ADVERTS 239 3279
ARTICLES 239 4873

Articles may be sent to 3 Ingle Drive
Or Email: sueboud@hotmail.com

'Tis the season to use park and ride

Leicester's park and rides are extending their hours this Christmas to ease the stresses and strains of festive shopping, and make travelling to the sales even easier.

For the first three Sundays in December, all three sites - Birstall, Enderby and Meynell's Gorse - will be open. Following feedback from passengers, the joint city and county council services will also hit the roads for the first time ever on the 26th and 27th December, enabling bargain hunters to scour the sales.

On 4th, 11th, 18th, 26th and 27th December, buses will run from 10.15am at all three sites, and the last bus from the city centre will return at 5.15pm.

On Christmas Eve and New Year's Eve, normal services will run with a slightly earlier last return bus from the city centre at 6pm.

Festive timetables for the Birstall, Enderby and Meynell's Gorse park and rides, which usually run Monday-Saturday from 7am-7pm, are available at www.quicksilverbus.co.uk or by calling 0116 305 0002.

Ratby Post Office & Newsagents

PHOTOBOOTH INSTORE

Only £8



Passport Check & Send

- ✓ Make sure your form's correct
- ✓ Applications despatched by Special Delivery
- ✓ Priority treatment provided
- ✓ Track your application online

30 Main Street - Tel: 2393001

Shop Hours
Mon to Sat
6 00am - 5 30pm
(7:30pm Wed & Sat)

Post Office Hours
Mon to Fri
9 00am to 5 30pm
Sat 9 00am to 12 30pm

WHY?

- High prices and rents are making it hard for some villagers to find suitable homes within their Communities
- You may need to move, and wish to stay in Ratby but can't find anything here to meet your need
- Tell us what you require so provision can be made to satisfy those requirements and keep you within your community

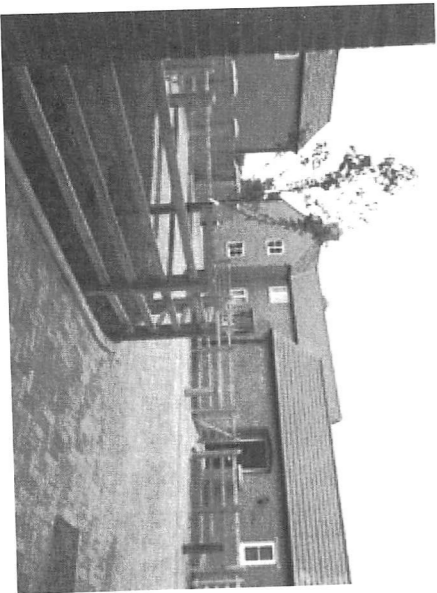
WHAT'S GOING ON?

- Local Needs Housing Survey
- Need for homes in the Parish to be assessed
- Questionnaires will be delivered to each Household in February 2012
- Individual questionnaire responses will be only be seen by the Rural Housing Enabler
- Results of survey will be available in late spring 2012
- This process may result in a small development of homes
- Any affordable homes developed cannot be sold on the open market, and will remain available for local people in perpetuity

WHAT CAN I DO?

- In February make sure young people/families/elderly in your Parish are aware of what's going on
- Tell people you know who may have been forced to move away to complete a form should they wish to return
- Ensure questionnaires are completed and returned in the Freepost envelope

THIS IS TO HELP YOUR COMMUNITY



Recently opened affordable rural housing in Heather

