

APRIL/MAY 2013

ISSUE 159

# WOT!

About Ratby

PUBLISHED BY RATBY SCOUT GROUP

## COFFEE and CRAFTS

Sunshine and colourful bunting welcomed us all to the Chapel Craft and Coffee morning on Saturday February 16<sup>th</sup>. Sunlight streamed in through the windows and the hall and café area were filled with sociable chatter for an event aimed at raising funds for Alzheimer's Research.

There was a wide range of tempting goods on offer, from books and greeting cards to delicious cakes and home made crafts. And after all that browsing who could resist a cup of tea and cake or a scrumptious lunch in the company of friendly village folk? As well as a chance to join in and sing a Happy Birthday song for Helen!

The morning contributed £550 to the grand total of £1002 raised for Alzheimer's Research to date. Many thanks to everyone who came along and gave support.



# FIELDING MEADOW

OFF FIELDING LANE, RATBY, LE6 0AS

Sustainable Development of the Year  
ProCon Awards 2012 Finalists

### Featuring

Highly Insulated Walls, Floors & Roofs  
Air Source Heat Pumps for Efficient Heating & Hot Water  
Low Energy Lighting as Standard  
Light & Spacious Rooms with large South Facing Windows  
for Solar Gain

SHOWHOME OPEN 12-4 P.M. - FRIDAY SATURDAY & SUNDAY

For further details please contact

Cawrey Limited

Kirby Grange Farm, Taverner Drive, Ratby Leicester LE6 0HQ

**Tel: 0116 239 0600**

[www.cawrey.co.uk](http://www.cawrey.co.uk)

email: [enquiry@cawrey.co.uk](mailto:enquiry@cawrey.co.uk)

## RATBY PARISH COUNCIL

### MESSAGE TO ALL DOG OWNERS!

Please will you clean up after your dog! The increase in dog fouling throughout the village is becoming quite intolerable – this also applies to the Ferndale park area and Burroughs recreation ground. The parish council provides dog waste bins for disposal of dog waste and these are emptied on a weekly basis. Please can you make sure that it is not your dog which is causing this problem.



### CORONATION CARNIVAL in RATBY

Following on the success of last year's Diamond Jubilee Day, Ratby Parish Council, together with other community groups in the village, is planning a Coronation Carnival on Monday, 27<sup>th</sup> May 2013. The event will be held at Ratby Sports Club, Desford Lane, Ratby from 2-5pm.

There will be various craft, food & produce stalls, paintings, games, treasure hunt, raffle, BBQ, Children's races, cakes teas etc. Although arrangements have not yet been finalised, there are several other attractions in the pipeline – so make a note in your diaries!

Ratby Parish Council \* 13 Station Road \* Ratby \* Leicestershire LE6 0JQ  
Tel: 0116 239 0167

---oOo---

## Porter's Discount Carpets

121/3 STATION ROAD, RATBY  
Telephone 239 3238 or Mobile 07872 488271

### SHOP AT HOME SERVICE



NOW INCLUDING L.B.P. Tiling SPECIALISTS IN CERAMIC AND PORCELAIN TILING

## RATBY VILLAGE SOCIETY

Meetings are held in the Village Hall, Main Street on the third Tuesday of each month, except July, August and December when we do not meet.

Admission; members £1.60, casual guests £2.60, refreshments included. All welcome.

16<sup>th</sup> April – A talk on LOROS, including a DVD of the Hospice.

21<sup>st</sup> May – 'Personalities Revealed'. An insight into the lives of local personalities.

18<sup>th</sup> June – David Bell's talk on 'Leicestershire Heroes.' Including Sir Alec Jeffeys.

Saturday 10<sup>th</sup> August. Annual Horticultural Show at Ratby Sports Club. Schedules will be available soon from the library and local shops.

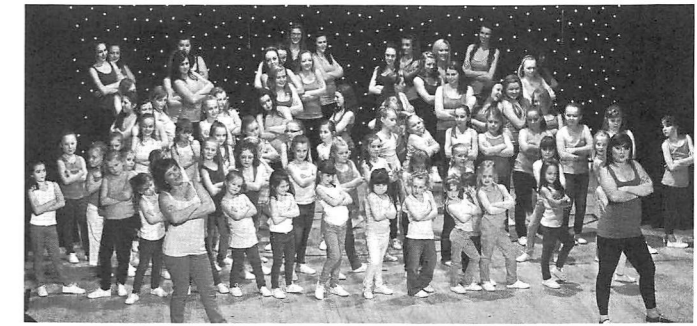
### RATBY ROAD REPAIRS

Spotted recently in the village!



## A.GOODWIN

CARPENTRY, JOINERY  
PROPERTY REPAIRS  
0116 2387316  
MOBILE: 0777 9872211



### TRUE BLUE DANCE CREW WEST END PERFORMANCE 2014

True Blue Dance Crew have just received the most amazing news....the all girl dance team are off to the West End, London, to perform at one of the leading Theatre's in January 2014 in a variety show with acts from all over the Country.

Coach Angie Phillips said "This day will be the most amazing experience for our dancers, this has always been my childhood dream to dance in the West End, but to take your own dancers means so much more.

This is such a prestigious performance, and I will be taking a mixed aged group aged 6 to 24. Some of the Elite Dance team have been with me for over 13 years, they along with our younger members, are all over the moon with the recent news".

The Group are currently in final preparations for their Annual Show to be staged on April 19<sup>th</sup> & 20<sup>th</sup> at Babington College, where the dancers will perform a varied selection of dance routines. The girls will perform three shows over the weekend, all are working extra hard in class to ensure a polished performance for their family and friends.

True Blue Dance Crew are a Community Based Non-Profit making Dance Team – No Exams – No Competitions, they put on an Annual Charity Show and take part in local events, but this year will be even busier with the West End looming.

Little Diamonds, Team Topaz and Team Sapphire Train at Ratby Village Hall on a Saturday Morning, the older girls Inters, Seniors & Elites train at Fosse Neighbourhood Centre, Mantle Road on a Monday Evening.

If you would like any information about the Group, or would like more information regarding Joining one of the 6 Dance Teams, please contact Angie Phillips on 07720 895623 or email at tdbc1@yahoo.co.uk.

TBDC are proud to be associated with Wishes 4 Kids – Fundraising for Terminally Ill Life Limited Children

## Groby Community College an Ofsted 'Good' School

Groby Community College passed their recent Ofsted inspection with flying colours after a team of inspectors said that the college had made such rapid progress in recent months that it was now a 'good' school.

The inspection team recognised the journey that the college is undergoing in order to become outstanding. The recently published report stated that the principal, leaders and teachers have an "uncompromising ambition for better outcomes for students".

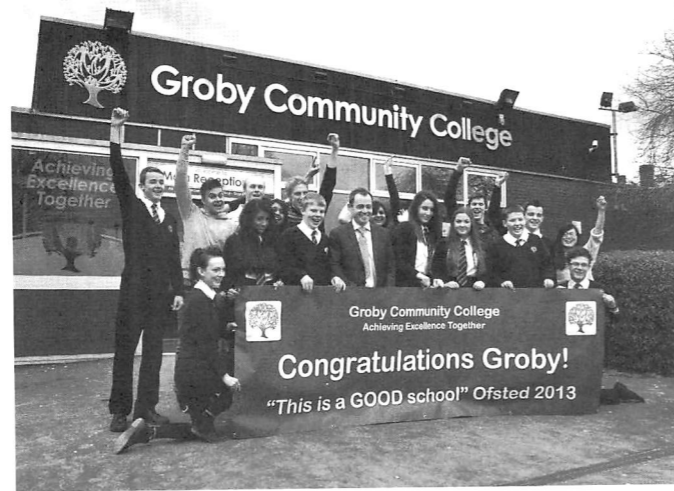
The two day visit at the end of February is part of Ofsted's new short notice inspections in which schools receive notification at 12.30pm the day before. Principal Robert Coles said that the college was not worried by only a few hours notice as he was proud for inspectors to see the college as it is on a daily basis.

"The students did themselves proud during the two days" said the Principal. Inspectors commented on the "good behaviour, courtesy and helpfulness of the young people in the college". Post 16 behaviour and attitudes are stated as "outstanding" in the final report which was published on both the college's and Ofsted's website on Friday 15 March 2013. Robert Coles stated that he was thrilled for the local area to have another Ofsted good school at the heart of the community. "Every student deserves to be able to attend a good school on their doorstep" he stated.

The Ofsted Report states the following:

- Teaching is good and much is outstanding
- Teachers have excellent subject knowledge
- Students enjoy being at the college and behave well
- Marking is used to give students excellent guidance on how to improve

The 'Brookvale – Groby 11-19 Learning Campus' consists of both Brookvale High School and Groby Community College; both are good schools with outstanding features.



## MOZART REQUIEM

Newtown Linford Choral Society visited Ratby on January 25<sup>th</sup>/26<sup>th</sup> to entertain us with a wonderful programme of music. Once again the performances took place in the glorious setting of our village church.

The evening opened with two songs performed by the choir. Soloist Sarah Stevens then took centre stage for her interpretations of two Goethe poems set to music by Schubert and Schumann.

Following the interval the full choir and orchestra performed Mozart's Requiem.

**Pabari's Ratby News.** (Est. 25 years)  
5 Station Road, Ratby, Leicester. LE6 0JQ.  
Tel: 0116 239 3287.




We Deliver Daily, Evening & Sunday Newspapers.

A wide choice of Magazines, Greeting Cards & Stationery.




Sweets, Confectionery, Tobacco, Soft Drinks & Milk.

Top Up Your Mobile Phone, Electric & Gas.

**A Vast Selection of Beers, Wines & Spirits**

**Play The National Lottery Here Now!**

Opening Times:-

Mon-Fri :-	5.00am to 1.00pm, then 2.30pm till 10.00pm
Sat:-	5.00am through until 10.00pm
Sun:-	7.00am to 2.00pm, then 7.00pm till 9.00pm




## NEW DIY and TRADE SHOP

Ratby villager Scott Beardsmore opened his shop for business in October 2012, and it has gone from strength to strength. As well as providing an office base for his well established business serving the building trade, SB Building Supplies, it has enabled him to offer a wide range of goods to the general public.

The shop, at 58 Main Street, just opposite the School entrance, is an Aladdin's cave of useful goods and equipment. You can buy anything from a pack of nails to a traditional broom, a light bulb, or a tube of glue. There are seasonal goods in stock such as coal and kindling, and snow shovels. Scott recently sold 75 sledges in just a day and a half! Wintry goods will be replaced by bags of compost and other gardening requisites. And Scott will endeavour to stock whatever it is you might need. He bought in paraffin after a villager requested it, and that has sold well. Just pop in and talk to him.

But it's not just everyday DIY tools and materials. Scott can supply just about anything to do with home improvement, building work, decorating and landscaping. If you need a new bathroom, an oak floor, or new windows call in and discuss your requirements. And prices are very competitive, with good quality brands at trade quality available more cheaply than in the well known national chains such as B and Q or Wickes.

Scott had been a Branch Manager for a builder's merchant for many years before setting up his own business, so he has a good working knowledge, providing a friendly service and advice to customers. Brochures are available to browse, and there is no charge for delivery on orders over £100. Scott's reliable monthly turnover from his business with the Trade is a good testament to his reputation and enables him to offer this service from his DIY and trade shop in Ratby.

Call in and see what's in stock, and don't forget to take your 15% discount voucher. (see the advert in this issue of Wot)

Scott is aiming to refurbish the premises soon, so there will be even more on display. Let's support this enterprising new venture, and keep shopping alive in Ratby.



## LETTERS and ARTICLES

We welcome letters and articles, but reserve the right to edit them or deny publication. Your name and address must be supplied, but you may ask for them to be withheld. Views expressed in articles and letters do not necessarily represent the views of the Publishers. We cannot be held responsible for information in advertisements, which we accept in good faith.

# YOUR NEW LOCAL DIY & TRADE SHOP

Ratby's no 1 supplier of Building and DIY materials. Come and visit the shop on Main Street today and see what savings you can make.

**Call 0116 2388 088**  
**www.sbbuildingsupplies.co.uk**



**SB BUILDING SUPPLIES**

Personal Service At Trade Prices

# DISCOUNT 15% VOUCHER

Claim your 15% discount\* on all items in our new shop 58 Main Street Ratby. Call 0116 2388 088 for more details.

## FOOTBALL SCHOLARSHIP SUCCESS

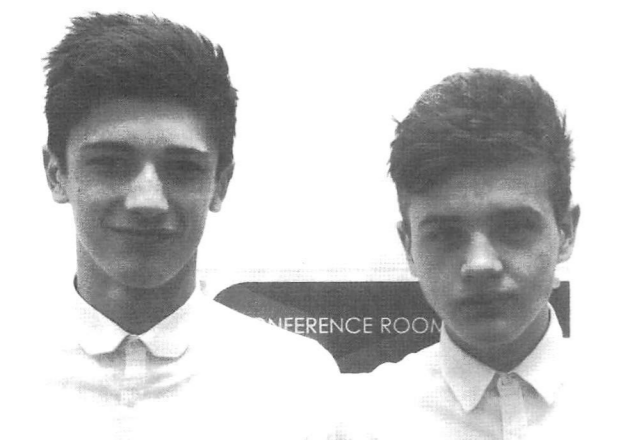
Two year 11 Groby Community College students have received offers of Football scholarships.

Only a small percentage of boys in Academies or Centres of excellence achieve this level, and great credit is due to Conor Anderson of Ratby, (Leicester City FC) and Jordan Hamill (Glasgow Rangers FC) and their families for their effort and commitment.

A significant part of being a scholar is apportioned to continuing education alongside Level 3 NVQ (Achieving Excellence in Sports Performance) which focuses on football development and other related courses.

Congratulations to Conor and Jordan!

Pictured are Conor, left, and Jordan.



### YOUR LOCAL ELECTRICIAN



"Everything From A Blown Fuse To A Complete Re-wire!"



- Fuse Box Upgrades, Extensions
- Sockets, Lights, Heating, Fans, TV etc
- Burglar Alarms & Security Lights
- Safety Inspections, Landlord Reports
- Fault Finding, Testing & Repairs
- Also Property Maintenance.



Call Now For A FREE Estimate!  
Office: (0116) 2872338 Mobile: 0798 0911 869  
Website Address: www.pqelectrics.com

## AN EVENING OF TREES

Over thirty people braved a cold wintry evening to hear a presentation about our native trees organised by Ratby Church's new ECO Group.

We heard a fascinating talk with slide show about the current impact of diseases on our native trees, by Mark Graham, Charnwood Borough Council Tree Officer. The evening was sparked by media coverage of ash decline.

Tim Adkin of the Eco group then put the current situation into a global context with a look at how our woodlands and forests have evolved over the centuries through natural change or human impact. He left us with a greater feeling of optimism and a sense of the value of our trees in our everyday lives.

A walk is to be planned in spring to explore Ratby's woodland and identify any signs of disease.

The Church Eco group has been set up to raise awareness of the importance of our environment and encourage positive action on improvement and conservation through measures such as recycling and saving energy. Every Sunday the Church newssheet features an 'eco tip.' We include an example here to get you all joining in with this worthwhile enterprise:

### Eco-tip 10

Defrost your food by putting it in the fridge the night before you want to use it. Not only will this help keep your fridge cold and reduce its power consumption, but it will also save you having to defrost at the last minute in the microwave.

### MELSWAY DRIVING SCHOOL Est. 1991

Mel Shipley D.S.A. A.D.I. M.I.A.M.

Pass Plus Registered  
\*Complete Beginners\* Part trained\*  
Motorway Tuition and Refresher lessons.

Telephone 238 6149  
3 Barton Close, Ratby.



## Ratby Parish Church Lunch Club Dates

### February to December 2013

This is held generally on the last Sunday of each month but due to work to be carried out to upgrade the toilets and other commitments we have had to change the dates.

Please see dates below

If you would like to join our lunch club please contact Joan Hawkins tel: 2393130.

We can arrange transport if you are housebound and have no other means of getting to the Church rooms. This is not a fund raising activity so we do not charge for the meal, however we are grateful for a small donation to help us and make it possible to provide for more people

Sunday 14<sup>th</sup> April

Sunday 19<sup>th</sup> May

Sunday 16<sup>th</sup> June

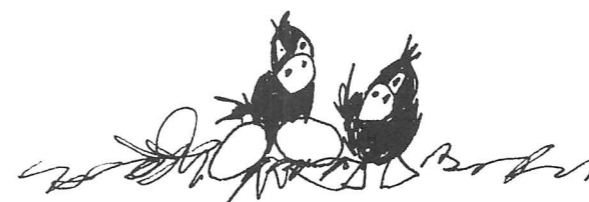
Sunday 21<sup>st</sup> July

**NO MEAL IN AUGUST**

Sunday 29<sup>th</sup> September

Sunday 27<sup>th</sup> October

Sunday 8<sup>th</sup> December (Christmas Meal)



## GROBY ZUMBA DANCE FITNESS!

Mon 5:30-6:30pm  
at Groby Village Hall

Cost is just £4!

Wednesdays from 4.45- 5.45 pm at Caterpillar Sports and Social Club, Desford  
ZUMBA is a great way to get fit, healthy and toned whilst having fun!

Whether you are an exercise addict or an exercise phobic, come and bring your friends and family and join the party!

For more information please contact Charlotte:

Tel: 07939 588092

Email: charlotte.tomlinson@hotmail.com  
Website: www.fit4dance.com or www.zumba.com



## THE OWL SEAT

This was carved by Isabel Lynam, and presented to the Woodland Trust in 1997. It was dedicated to the memory of Irene Kathleen Miles, and is now undergoing restoration by the Trust.

Two members of Ratby Ramblers are pictured with the post, which is all that remains of the seat for the time being.



YOUR LOCAL CAB COMPANY  
NOW AVAILABLE

## GROBY CABS

LOCAL & LONG DISTANCE  
ANYTIME ANYWHERE

AIRPORT TRANSFERS  
E.MIDS = £20.00

PHONE:

0116

2 31 22 14

## SNIPPETS!

Whilst enjoying a cup of tea I got involved in a few interesting conversations during the Coffee and Crafts morning at the Chapel (see page 1).

Hoz Gamble mentioned that Ratby Railway Station was formerly known as 'Ratby Lane' and the site was originally in the Parish of Kirby Muxloe prior to Boundary changes. 'The Railway' was the ticket office, and was called The Whitwick Colliery Arms back in 1833/34, only becoming The Railway Inn in 1862.

Mrs Margaret Green recalled a Ratby school trip from Ratby Station that she had taken part in around 1938. The children visited Port Sunlight, stopping en route to view the entrance to the new Mersey Tunnel. She remembers spilling her pop down her new red dress.

Do you have memories of trips by train from Ratby Station? We'd love to hear about them.

Wot 'Roving Reporter.'

## RATBY COMMUNITY ORCHARD

Members recently held a 'visioning evening' when we discussed ideas for the future. When all the questionnaires have been returned we'll identify our priorities!

This year we are hoping to hold an apple blossom picnic, subject to good weather!

**WATCH  
BATTERIES  
& STRAPS**

**FITTED WHILE  
YOU WAIT**

**ALL BRANDS**

**SYKES JEWELLERS**

**8 Bradgate Road, Anstey  
Tel: 0116 236 2510  
www.sykesjewellers.co.uk**



## LOCAL POET

Veteran Wot! correspondent Horace (Hoz) Gamble has produced another book of poems, containing a few which have previously been published in Wot!.

'Before I Forget' is on sale at £6.00 (or £7.00 with postage).

Copies can be obtained by ringing the author on **238 7240**.

Hoz has kindly shared his latest poem which was composed since the book was published.

## EUROSTAR SHINES

Twinkle, twinkle, Eurostar  
How I wonder where you are.  
Down below the world so low  
through the Chunnel you must go.

Twinkle, twinkle, Eurostar  
are you going very far?  
Yes. Now the tunnel has been bored  
I'm on the way to Paris Nord.

Twinkle, twinkle Eurostar.  
Do they see any other gare?  
Yes. On the continent it hustles  
travellers from Lille to Bruxelles.

Wondrous, wandering, Eurostar  
is there anything on a par?  
Er, yes - the German I.C.E.  
et La Francais T.G.V.

Hoz.

**HIS and HERS**

**For ALL ASPECTS of  
LADIES AND GENTS  
HAIR DRESSING**

**Specialists in Permanent Waving**

**156 STATION ROAD, RATBY  
239 4429**

## LETTERS TO THE EDITOR



Dear Sir,

Being a regular reader of the 'Wot' I wonder if you will publish my letter in the next edition.

'February 4<sup>th</sup>. MESSY MONDAY' starting every other Monday at the church. What's all this about?

I fetched my grandchildren from school and we walked up the hill to see what it was all about. From 3.15 to 4.30 Rev Peter has started a new venture encouraging youngsters to join together for different activities. Skittles, building towers with junk, icing biscuits with loads of different toppings were just a few of the things. The children enjoyed doughnuts and juice when they arrived, Parents and grandparents a warm cup of tea.

The weather was cold and windy, so the warm church and laughter made it a pleasure to be there. Looking forward to the next 'MESSY MONDAY.'



Barbara Lee (Grandma)

## Ratby Post Office & Newsagents

- ✓ Passport Check & Send
- ✓ Digital Photobooth
- ✓ Travel Money & Insurance
- ✓ Personal & Business Banking
- ✓ Insure your Life, Car, Van, Motorcycle, Home or Pet
- ✓ Post Office Credit Card
- ✓ Homephone or Broadband
- ✓ Bill Payments
- ✓ Rod Fishing Licences
- ✓ Many Other Post Office Services

30 MAIN STREET, RATBY, LEICS  
TEL: 0116 2393001

Large selection of Papers, Mags, Tobacco, Confectionery, Gifts & Greeting Cards etc.

Shop Hours: Mon to Sat 6:00am - 5:30pm (7:30pm Wed & Sat)	Post Office Hours: Mon to Fri 9:00am to 5:30pm Sat 9:00am to 12:30pm
--	---

## BROOKVALE HIGH SCHOOL and WEST GATE SPECIAL SCHOOL

Brookvale has been delighted to play host, once again, to a group of students from West Gate Special School. On this occasion, a class of 10 was divided in half, with 5 students coming to us alternative weeks (for 4 weeks) to cook with 3 Brookvale staff volunteers, 2 of their own teaching staff and several of Brookvale's own students.

The children made a selection of chocolate chip and fruit cookies on the first session, with cheese straws being on the menu for the second session. With help from Brookvale students, the West Gate children really got 'stuck in' with mixing, rolling, assembling, baking and of course (most importantly of all) tasting the fruits of their labours!

It has always given us a great sense pleasure and fulfilment to see the children from West Gate enjoying being part of a main stream school (albeit for a short time) whilst observing our own students assisting them where they can and forming relationships with children whose needs may be very different from their own.

We would like to take this opportunity to thank Budgens of Groby for their donation of various ingredients which we used for these cooking sessions.

We look forward to working with the West Gate students and their staff members again in the very near future.

Elaine Freeman

**JULIE'S  
HAIRDRESSING**

MAIN STREET RATBY

Traditional and Modern Styling

**Telephone 239 2406**

## MEMORIES

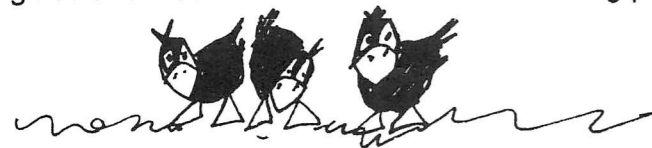
### Or How I Did Not Snorkel On The Great Barrier Reef.

Imagine, if you will, a lazy lagoon on the atoll island of Raratonga in the Cook Islands, 1600 miles NE of Auckland, NZ. The sun shining down from a cloudless sky, and the beautiful calm water within the coral reef. I had a one and only chance of snorkelling on our final day here and it was wonderful. The water was clear down to the sand and coral below and I saw a myriad of colourful fish swimming in and out of the rocks.

Three weeks later, the Barrier Reef. A relentless blazing sun beating down. I'd expected the sort of scene you get in a James Bond film. Palm trees for shade, wafting in a gentle breeze on the shoreline. I emerged from my air conditioned cabin to something more like Alfred Hitchcock's 'Birds.' The island was not large, and there wasn't a tree in sight. Part of the beach had been sectioned off with long pieces of rope for our use. Nearly all of this was being used by birds as a roosting spot. I realised why later. After picking up snorkels and foot gear we transferred by tender to this beach. I had taken off my sandals so as not to get them wet and stepped barefoot onto the sand. OUCH! The birds had more sense than you'd expect as the sand was so hot.

David and I hopped speedily across to a spot where we could leave our gear. With a 'cheerio' he was gone with the more experienced group. Looking out to sea a little later, without my specs, he and the other snorkelers were just little dark objects bobbing about on the water – totally unrecognisable.

I put on lots of sun cream, pulled on my foot gear (that was a mistake) and set off for the water. An ungainly, bow legged picture I must have made. The sand was soft, and I couldn't walk in my flippers. I had to turn around and walk backwards into the sea. The waves were pounding and after just two steps I was up to my middle and fell over. We'd received instructions about what to do before putting on goggles. I couldn't bring myself to do it, and anyway I was being knocked all ways by the waves, struggling to keep my balance. I put a little saliva on the glass and washed them in sea water. Having put



them on I couldn't see a thing. I swam about close to the shore, tried looking below water, to no avail. Recent storms around the coast had, I believe churned up the sea bed. After a while I thought, 'Blow this for a lark,' struggled back onto the beach and caught the next tender back to the boat.

And that is how I did not snorkel on the Great Barrier Reef!

Betty Hulme



**Messy Mondays**  
in April & May  
15<sup>th</sup> April, 29<sup>th</sup> April  
and 13<sup>th</sup> May  
Starting at 3.15pm  
Ratby Parish Church

Accompanied by an adult, **Messy Monday** is open to all young people up to school year 6.

**OAKLANDS  
RIDING SCHOOL**

*WE CATER FOR EVERYONE FROM  
THE NOVICE TO EXPERIENCED RIDER*

**All weather riding area**  
Ring Julie on 238 7570

**RATBY PHARMACY**  
10 MAIN STREET LE6 0JG

**\*FREE PRESCRIPTION COLLECTION  
SERVICE from all surrounding surgeries.**  
**JUST PHONE US ON 239 3139 with your  
requirements. We will process your  
prescription with the surgery.**  
**All you do is COLLECT IT from us, or we can  
deliver to your home if needed.**  
**You can e mail us with requirements;**  
[ratbychemist@aah-n3.co.uk](mailto:ratbychemist@aah-n3.co.uk)

## Bradgate Lions Club News

Things have been rather quite since Christmas, although we did enjoy a post Christmas dinner and Quiz at the Bulls Head, Hinckley Road, Leicester. As part of our social events calendar.

We are now looking forward to one of our most eagerly awaited events of the year, when we entertain SWAG's to Skittles and a Fish and Chip supper. Swag's are a local group of special needs young people, based in Groby, who challenge us annually to a match, which they always win, and they thoroughly enjoy doing so.

On February 23<sup>rd</sup>. We hosted 'A Night at the Races' at Botcheston Village Hall, This was a Charity Fund Raising event. All proceeds going into our charity funds, ready for allocation to various good causes in May later this year.

The month of March sees us enter a hectic few weeks with our Easter themed fund raising events, We have the 'Easter Egg Prize Draw Baskets' in 12 local public houses, We also have our 'Easter Bunny' Float which tours the streets of Groby, Ratby and Kirby Muxloe. And 'Easter Bunny' Pub crawl of drinking establishments in Markfield, Copt Oak, Stanton under Bardon, Thornton, Botcheston and Ratby. And finally on March 30<sup>th</sup>. an all day bucket collection at the Glenfield Co-op Superstore.

Another date for your diaries is a 'St. Georges Gala Concert' at Markfield Community Centre on Saturday April 27<sup>th</sup>. with the Croft Silver Band. Starting at 7.30PM. Tickets for this are £8.00 including a 'Ploughmans' type supper.

### Ordinary People – Amazing Rewards

How would you like to join BRADGATE LIONS CLUB? We are looking for new members with new ideas and bags of enthusiasm to take our successful club into the future.

The Bradgate Lions started in 1988 and have raised over £140,000 since then. These funds have been distributed to many deserving charities since then such as:-

- Rainbows Children's Hospice
- D.L.R. Air Ambulance
- Loros.
- Wishes 4 Kids.
- Children in Need

And many more International, National and Local Charities and Good Causes.

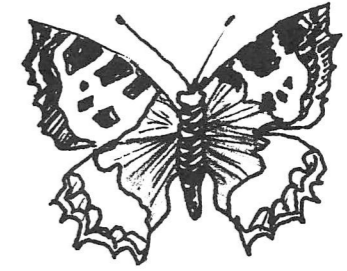
Bradgate Lions provide community initiatives that are of real benefit to those who are less fortunate amongst us namely:-

- Westgate School Pupils
- SWAG's ( A local group for young people with special needs)!

- Glenfield Hospital Patients.

It's not all just work. Members enjoy camaraderie at monthly business meeting held on the second Thursday of each month, an various social activities arranged by the club. Now we are looking for new members who can contribute their ideas for new activities and opportunities for fun, fundraising and service initiatives. If this article strikes a chord with you and any of your friends, colleagues or partner, then join us at one of our meetings, and meet Club members and learn more.

Please telephone Lion Roger Gamble on 01530 242912



**DEADLINE for issue 160**  
**JUNE / JULY 2013**  
**FRIDAY 17th MAY**

EDITOR 239 3367

ADVERTS 239 3279

ARTICLES 239 4873

Articles may be sent to 3 Ingle Drive  
Or Email: [sueboud@hotmail.com](mailto:sueboud@hotmail.com)

BROKEN  
iPhone?

Also repairing...

iPod Touch  
iPad  
Samsung ■ HTC  
Blackberry  
Playstation 3  
Xbox 360  
PSP  
Nintendo DS ■ Wii

- Fast, Friendly Service
- All Repairs Guaranteed
- Price Match Promise

FOR AN  
INSTANT QUOTE CALL  
**0116 286 6447**

Unit 33, King Street Buildings, George Street Entrance,  
Enderby, Leicester LE19 4NT  
[www.iparepair.co.uk](http://www.iparepair.co.uk)